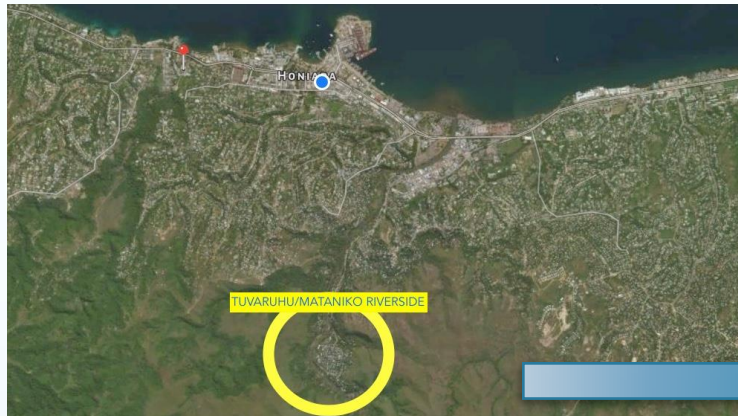


MATANIKO RIVER FLASH BACK 2014

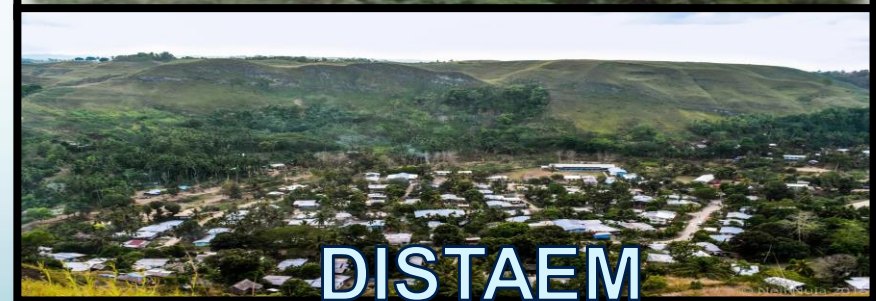
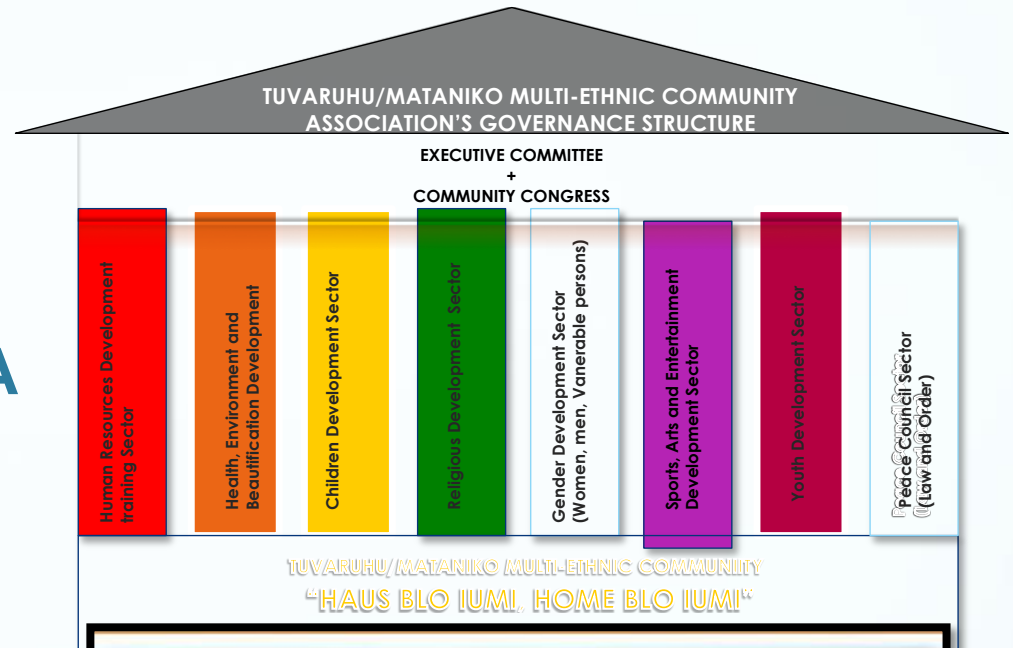
Solomon Islands Flood (April 2014)



WELKAM TO TUVARUHU/MATANIKO MULTI-ETHNIC COMMUNITY ASSOCIATION (Incorporated). TMMECA

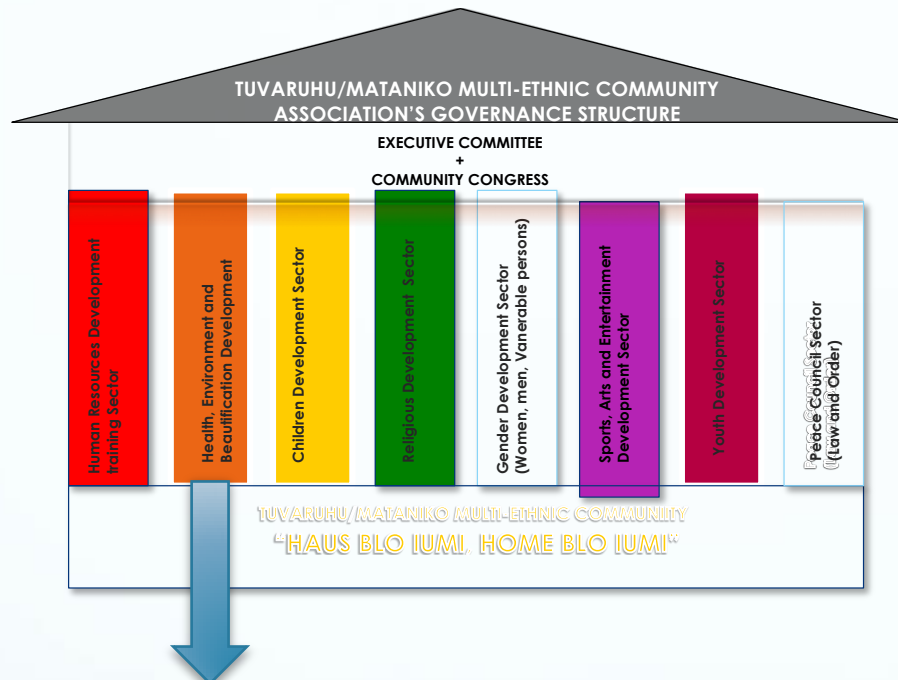


CENTRAL HONIARA,
NORTHWEST
GUADALCANAL
SOLOMON ISLANDS.



WE LIVE UP ALONG THE MATANIKO RIVER SINCE 1968

TMMECA



HEALTH, ENVIRONMENT AND BEAUTIFICATION SUB-COMMITTEE.

Headed by;

1. Sector Coordinator
2. Female Deputy Coordinator
3. Sub-committee members from our 6 zones.



TMMECA

HEALTH, ENVIRONMENT AND BEAUTIFICATION SUB-COMMITTEE.

Headed by;

1. Sector Coordinator
2. Female Deputy Coordinator
3. Sub-committee members from our 6 zones.

FUNCTIONS/RESPONSIBILITIES:

- I. Looks after the general health well being of the community.
- II. Plan, organize and coordinate The HEB Sectors activities.
- III. Liaise, participate and form partnerships with relevant Stakeholders/Authorities, e.g. R2RP, our Community High School.
- IV. Create innovation in HEB, e.g. awards.

RIDGE TO REEF CLEANUP CAMPAIGN INNOVATION WEEK = COMMUNITY SPORTS.



TMMECA

CHALLENGES

Key challenges

1. Attitude and attitude.

HOW TO BREAK IT?

1. Long and permanent remedy: Via Children and their Education, focus = TCHS, 2 – 5 yrs to create KID CHAMPIONS.
2. Current – Medium term: Awareness programs, continous community clean up innovation campaigns, e.g. wards, rewards and prizes, Colaboration and partnership with key stakeholders e.g. HCC, Govrt, Donors for support, Recycling and regeneration of organic and inorganic materials for income and healthy food stuff for families and community.

TANGIO TUMAS

