



CRITICAL ECOSYSTEM
PARTNERSHIP FUND

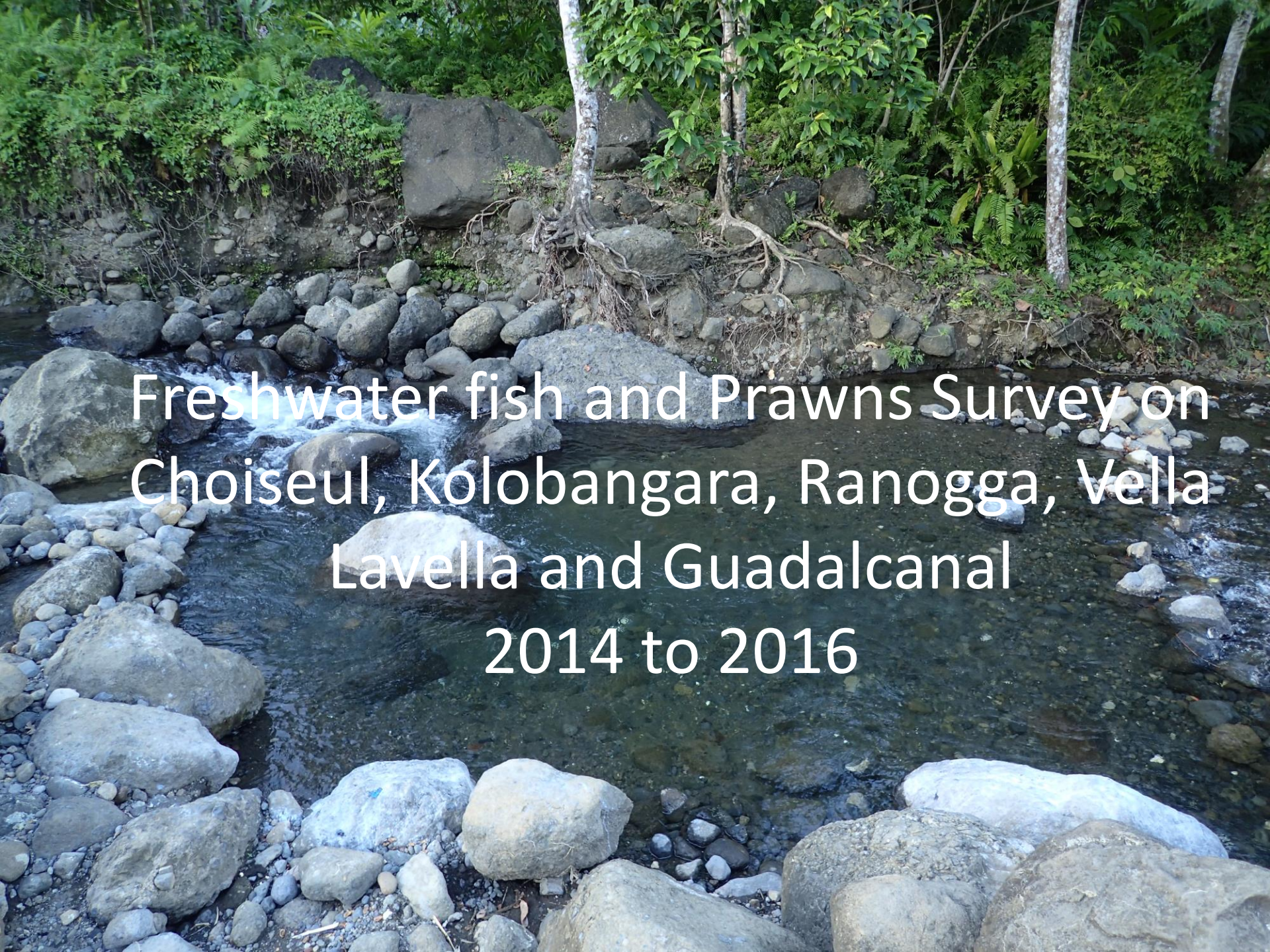


French Ichthyological Society (SFI)

Freshwater Fishes: Solomon Islands River Cling Gobies

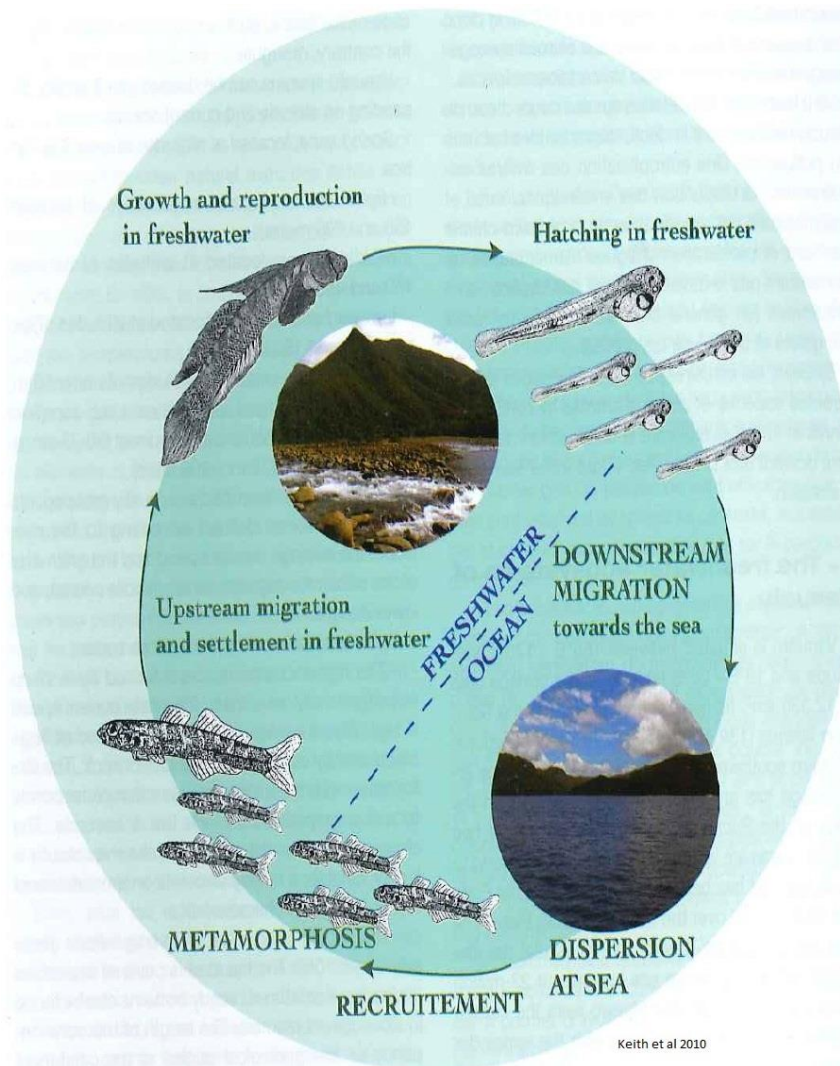
Mr. Piokera Holland

Species Forum, SINU, Kukum Campus- October 4, 2017



Freshwater fish and Prawns Survey on
Choiseul, Kolombangara, Ranogga, Vella
Lavella and Guadalcanal
2014 to 2016

Amphidromous life cycle



Disk-like pelvic fin



Goby feeding



Survey Methods



Field Pictures



Friendship



Lentipes kolobangara



Schismatogobius tiola



Since the beginning of our (MNHN, Paris and ESSI) study in the Solomon Islands, 3 years ago, we **discovered several new amphidromous fish and crustacean species** (Gobiidae and Eleotridae families).

- **70 species of fish**
- **48 species of crustaceans**

118 species for the Solomon Islands

10 new species (6 fish; 4 crustaceans)

Eleotris bosetoi



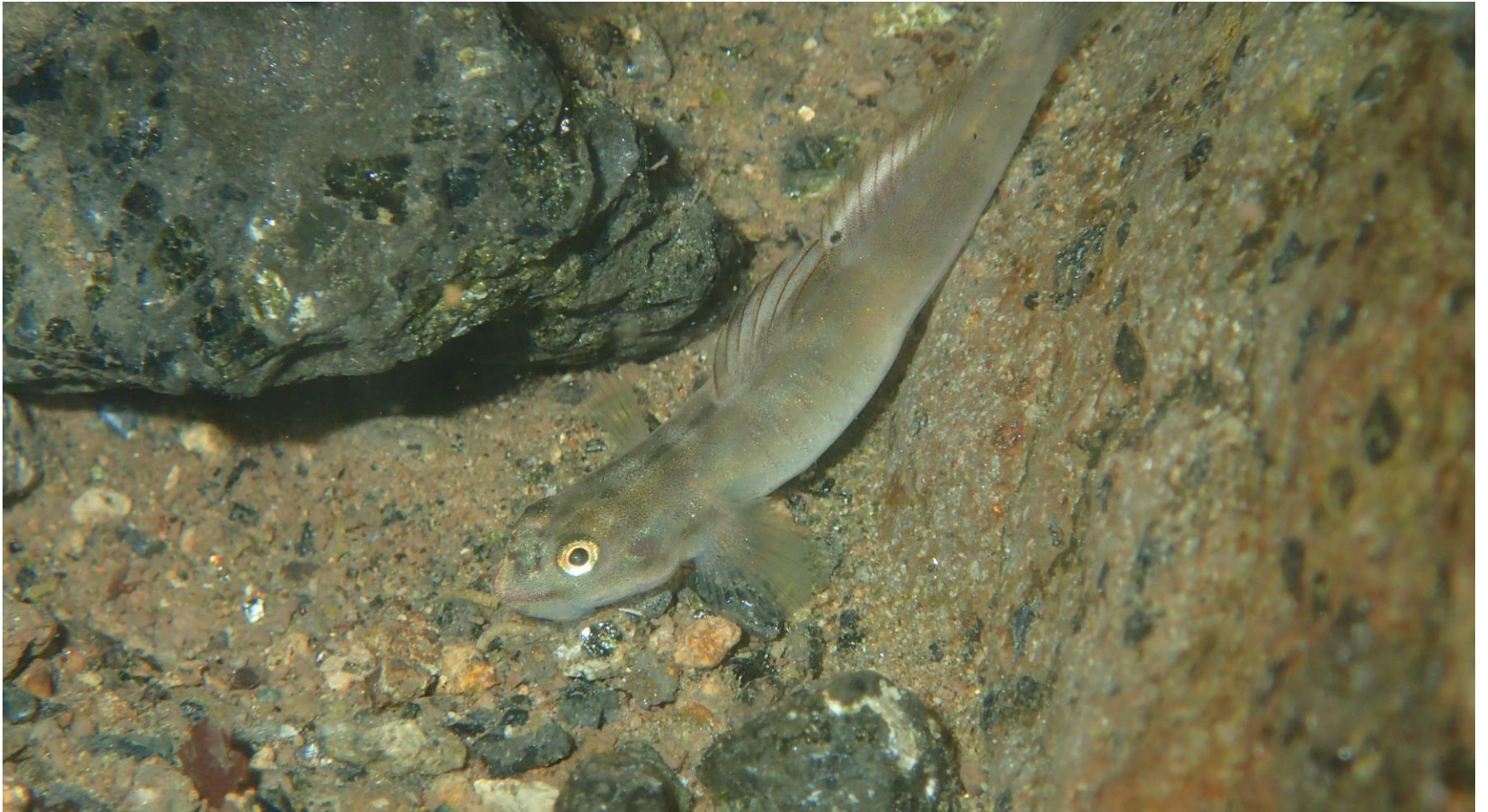
Schismatogobius essi



Schismatogobius mondo



Lentipes solomonensis



Lentipes kolobangara



Sicyopterus stiphodonoides



Sicyopterus aiensis



Schismatogobius vanuatuensis



Smilosicyopus felhmanni (m)



Smilosicyopus felhmanni (f)



Anguilla marmorata



Stiphodon rutilaureus



Giuris margaritacea



Kuhlia marginata



Stiphodon semoni



Lentipes sp (F)



Eleotris fusca



Sicyopterus lagocephalus



Rhyacichthys cf gilberti°



Rhyacichthys cf gilberti°



Belobranchus segura



Belobranchus segura



Stiphodon surrufus



Stiphodon semoni



Smilosicyopus *fehlmanni*



Glossogobius illimis



Sicyopterus cyanocephalus



Sicyopterus stiphonoides



Awaous ocellaris



Atopsis sp



Atyoida pilipes



Caridina papuana



Caridina nsp1 novem species



Microbrachium lar



Macrobrachium latimanus



Caridina neglecta



Macrobrachium cf australe



Utica gracilipes



Labuanium trapezoideum

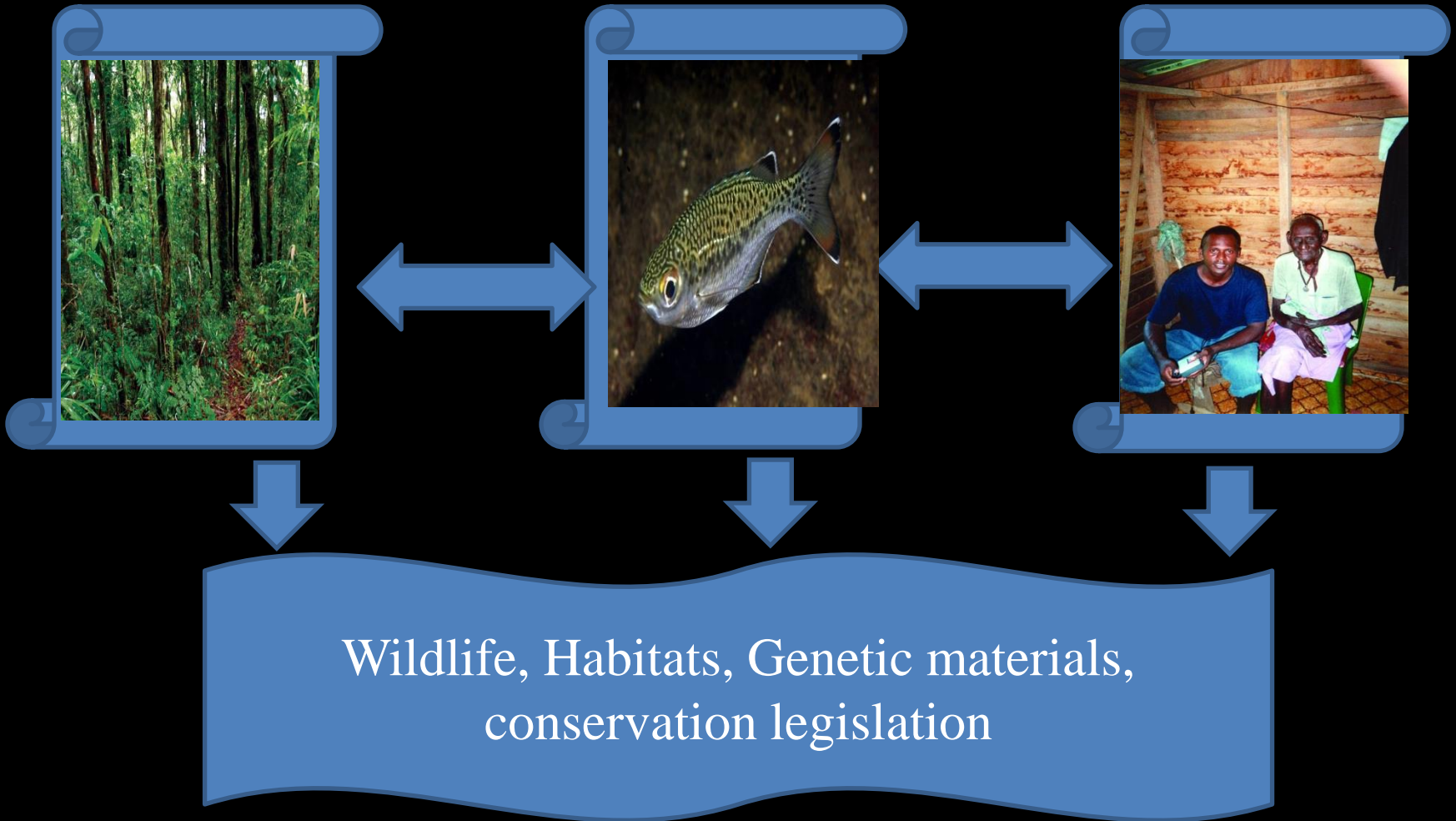


Wildlife management strategies
Must be based on sound scientific assessments

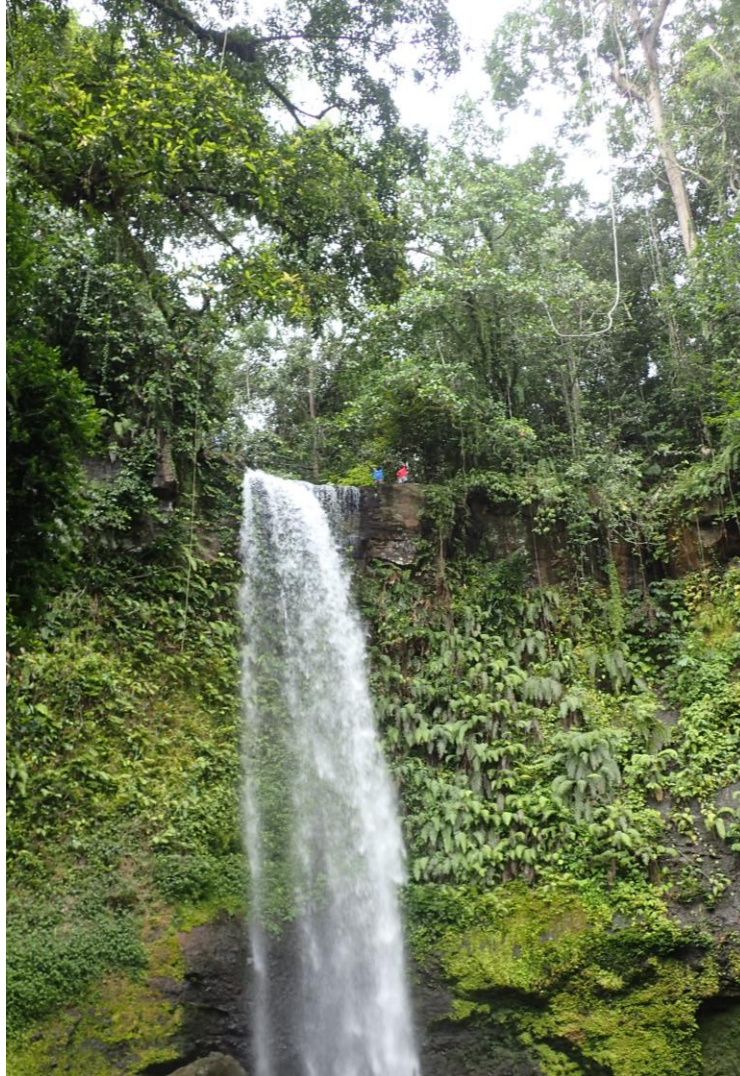


Wildlife, Habitat, Genetic materials,
conservation legislation

Broader Implications



Leana Jola



Tagio tumas

