

# Solomon Islands Species Forum

2017

Birds

Robert G. Moyle & Michael J. Andersen

**KU** BIODIVERSITY  
INSTITUTE  
The University of Kansas

  
THE UNIVERSITY of  
NEW MEXICO



# Birdlife International

“Endemic Bird Areas” of the world

## **Need for research**

Main Solomons - CRITICAL

Temotu - HIGH

Rennell - URGENT

**Existing knowledge = Poor**

Solomon Islands has more restricted range species than any other.....IN THE WORLD

## Choiseul Pigeon

*Microgoura meeki*



Choiseul Pigeon

## Makira Woodhen

*Gallinula silvestris*



Makira Woodhen

## Thick-billed Ground Dove

*Gallicolumba salamonis*



Thick-billed Ground Dove

# Threats

- Habitat Loss
- Invasive species
  - Cats
  - Ants
  - Rats
  - Dogs?
  - ??



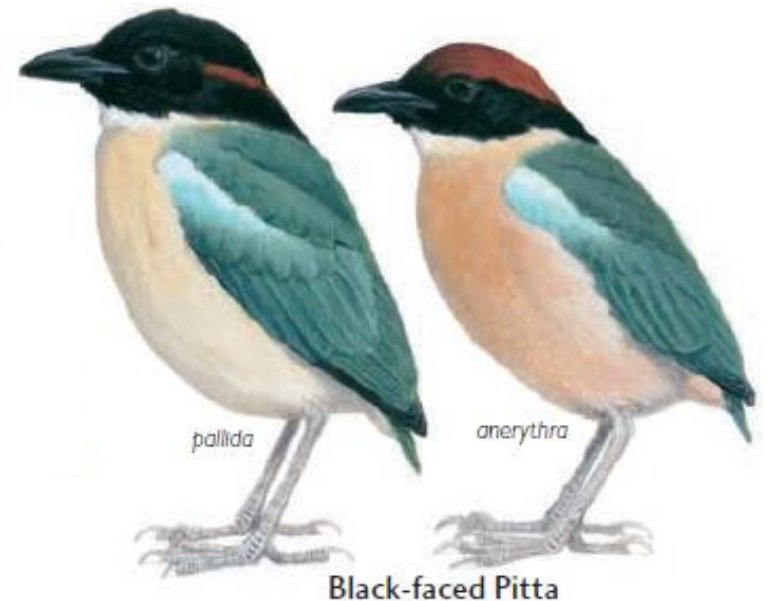
**SOLOMONS (including Bougainville but not Temotu)**

Beck's Petrel	Critically Endangered	Introduced predators?
Heinroth's Shearwater	Vulnerable	Introduced predators?
Sanford's Sea Eagle	Vulnerable	Forest loss; hunting
Imitator Goshawk	Vulnerable	Forest loss
Makira Woodhen	Critically Endangered	Introduced predators?
Yellow-legged Pigeon	Vulnerable	Forest loss; hunting
Chestnut-bellied Imperial Pigeon	Vulnerable	Forest loss; hunting
Fearful Owl	Vulnerable	Forest loss
Moustached Kingfisher	Vulnerable	Introduced predators?
Black-faced Pitta	Vulnerable	Introduced predators?
Malaita Fantail	Vulnerable	Unknown
Kolombangara Leaf Warbler	Vulnerable	Tiny range and population
Ranongga White-eye	Vulnerable	Forest loss
Gizo White-eye	Endangered	Forest loss
White-eyed Starling	Endangered	Unknown (forest loss?)
Guadalcanal Thrush	Vulnerable	Tiny range and population
<b>TEMOTU</b>		
Santa Cruz Ground Dove	Endangered	Introduced predators?
Palm Lorikeet	Vulnerable	Forest loss
Santa Cruz Shrikebill	Endangered	Unknown

-from *Birds of Melanesia*, Guy Dutson

# Lack of Knowledge

- Baseline survey data
- Species requirements
- Invasive species
- Taxonomy



**Habits:** Recent records from primary forest and patchwork of forest and second growth....historical records also from forest on coastal and alluvial plains.....

**Conservation status:** Recent records only from near Tiratonga village on Isabel...possibly overlooked elsewhere.....may be threatened by introduced cats and rats.....**Vulnerable**

3 subspecies....

-from *Birds of Melanesia*, Guy Dutton



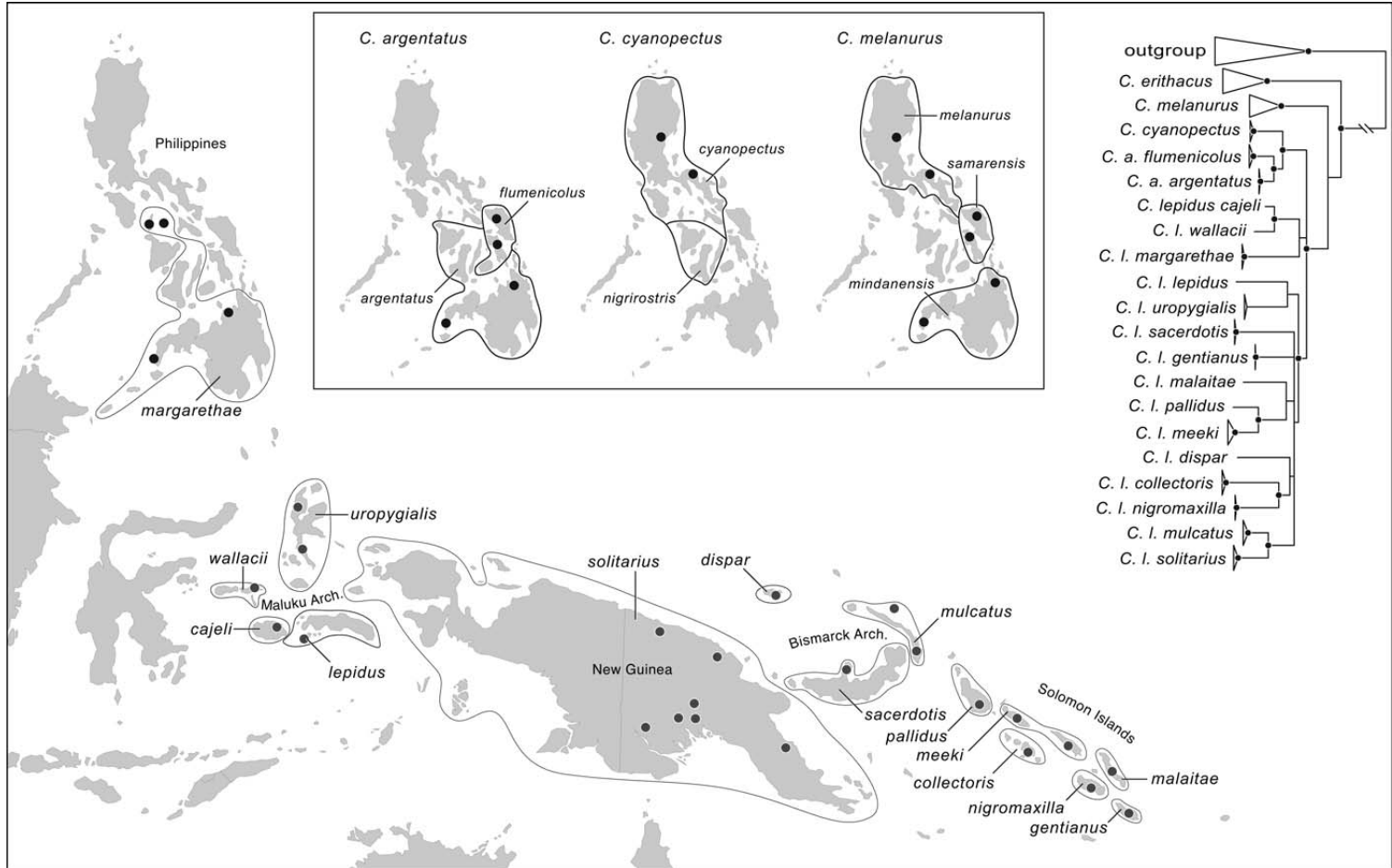
# Variable Dwarf Kingfisher

*Ceyx lepidus*





# *Ceyx lepidus*, 1 to 15 species 6 species in the Solomons!



# Why do we know so little?

- It's difficult
  - Surveys
- It's expensive
- Positive reinforcement

## What can be done?







People and communities throughout the Solomon Islands  
Ministry of the Environment, Climate Change, and Disaster Management  
Ecological Solutions Solomon Islands  
Solomon Islands Community Conservation Partnership  
Solomon Islands National University  
University of the South Pacific  
National Science Foundation, USA

