



The CBRM+ Approach - a practical journey

*Prepared for NRM 2017
2 October 2017
Heritage Park Hotel
Honiara
(presented by Agnetha Vave-Karamui)
ECD/MECD*

Outline:

- **MECDM (ECD)**
- **CBRM+ Policy, Plan & approaches**
- **Lessons and ways ahead**



Vision :

"A **safe, sustainable and resilient environment** for Solomon Islands"

Mission:

To provide an **enabling environment** for the safety and socio-economic development of Solomon Islands through the **application of necessary safeguards** on:

- ❑ Sustainable development, use and management of natural resources and build a resilient environment;
- ❑ The provision of meteorological services;
- ❑ Reducing the risk and impact of climate change and other hazards to communities;
- ❑ Leading and managing disaster preparedness and their consequences;
- ❑ Developing and supporting the planning and service delivery functions of the ministry.



4 Technical Divisions

- Environment & Conservation Division
- Climate Change Division
- Disaster Management Office
- SI Meteorological Services



ECD

- *Environment Act 1998 & reg. 2008*
- *Wildlife Protection and Management Act 1998, (Amendment 2017)*
- *Protected Areas Act 2010 & reg. 2012*
- ✦ *other regional & International frameworks and partnerships (UN Conventions CBD, CITES, WHC, SPREP, CTI-CFF)*



CBRM+

Building Blocks

- ❑ *Biodiversity*
 - ❑ *Inshore Fisheries*
 - ❑ *Climate Change
(Adaptation)*
- +
- CBRM Principles***

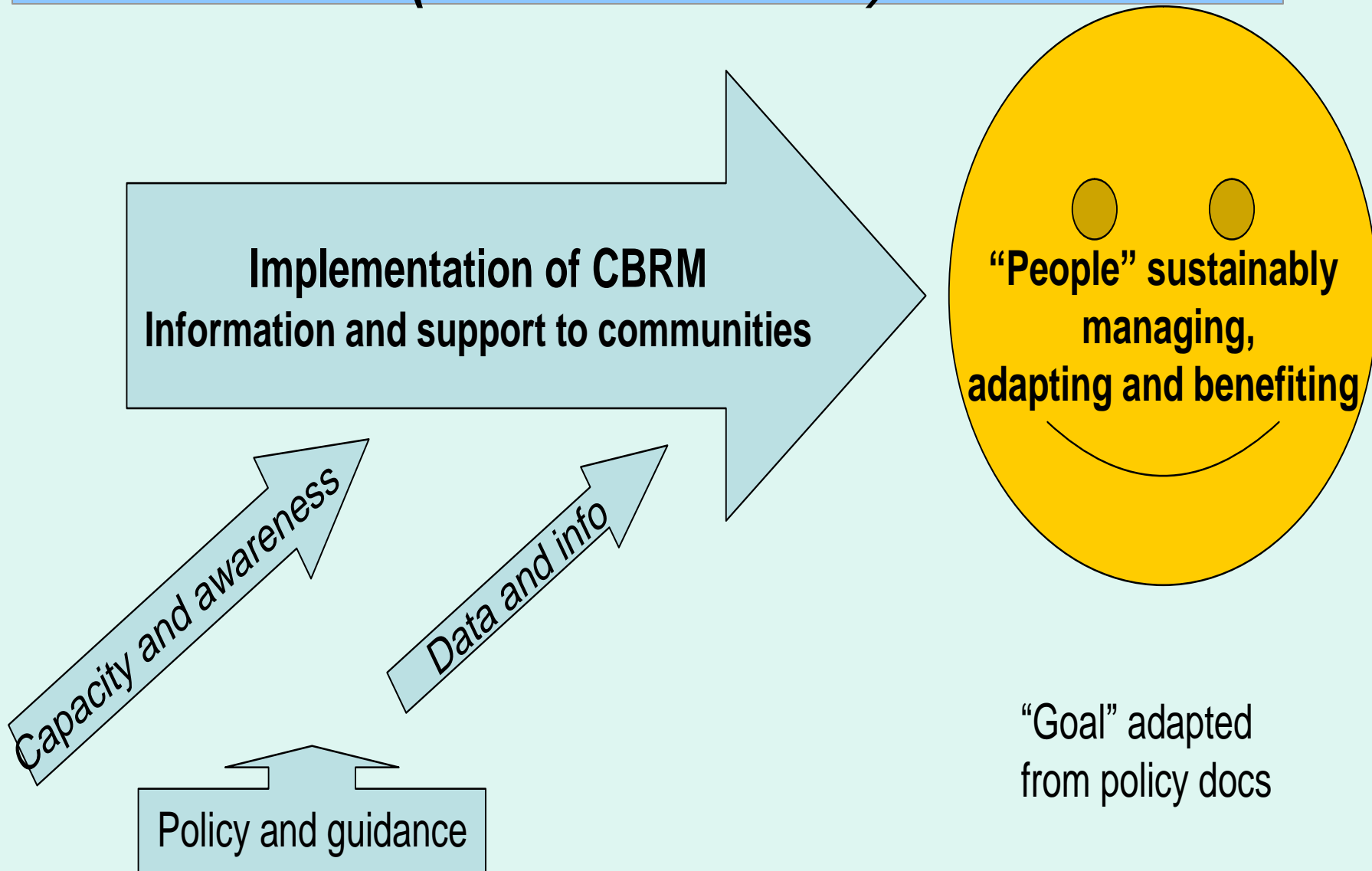


CBRM + principles....

- ***People-centred program***
 - ***Enable balance/maintenance of marine & land resources for food security, support people's livelihoods***
 - ***Visible impacts***
- ***Vehicle for progressing other national priorities – integrated action***
- ***Sustainable & workable***



CBRM+ *National Policy & Plan* (*NPOA 2009*)



Implementation of CBRM
Information and support to communities

Capacity and awareness

Data and info

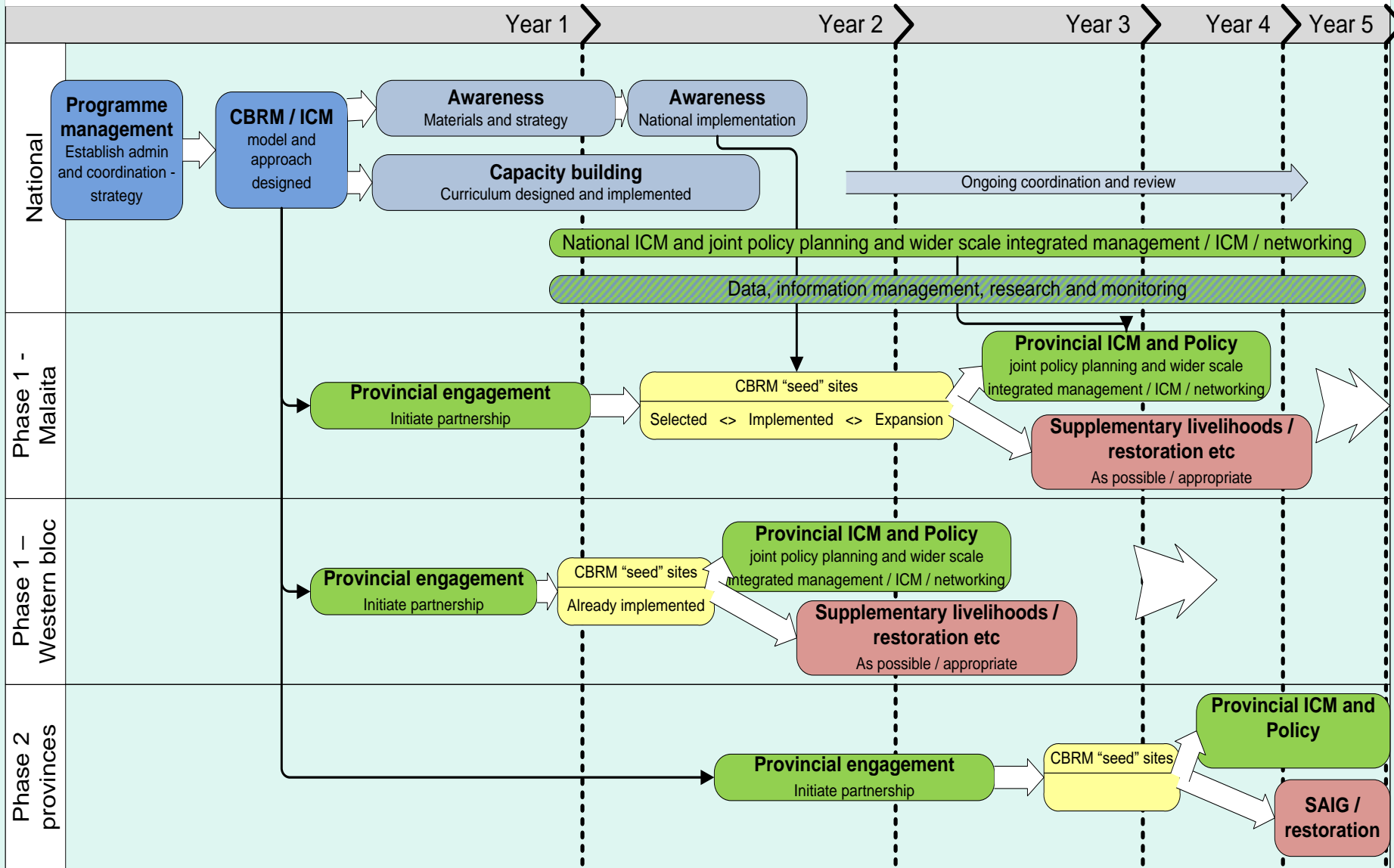
Policy and guidance

"People" sustainably
managing,
adapting and benefiting

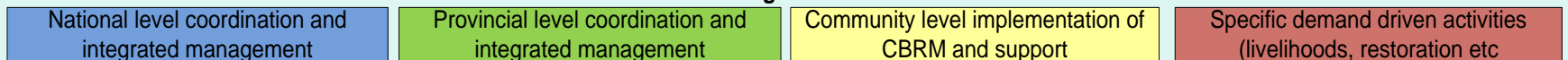
"Goal" adapted
from policy docs

Our approach...

Figure 2. Implementation of the National Plan of Action



Legend



CBRM National Work Program

USAID | ASIA
FROM THE AMERICAN PEOPLE

CISP
Coral Triangle Support Partnership

**PRINCIPLES FOR BEST PRACTICE
FOR COMMUNITY-BASED RESOURCE MANAGEMENT (CBRM)
IN SOLOMON ISLANDS**

The Nature Conservancy
Protecting nature. Preserving life.™

August 2012
Indo-Pacific Division
Solomon Islands
Report No 1/12

RIDGES TO REEFS CONSERVATION PLAN
for Isabel Province, Solomon Islands

USAID | ASIA
FROM THE AMERICAN PEOPLE

CISP
Coral Triangle Support Partnership

Marine Protected Areas in Solomon Islands:
Establishment, Challenges and Lessons Learned in Western Province.

Ridges to Reefs Conservation Plan for
Choiseul Province, Solomon Islands

WWF

October 2011
This stabilization was
Laasoovof, with funds

Manual: AAS-2013-17
**Community-based marine resource
management in Solomon Islands:
A facilitators guide**

Australian Government
Australian Centre for
International Agricultural Research

CGIAR

**PROTECTED
AREAS TOOLKIT**
A Step-by-Step Guide to Creating
Protected Areas in Solomon Islands



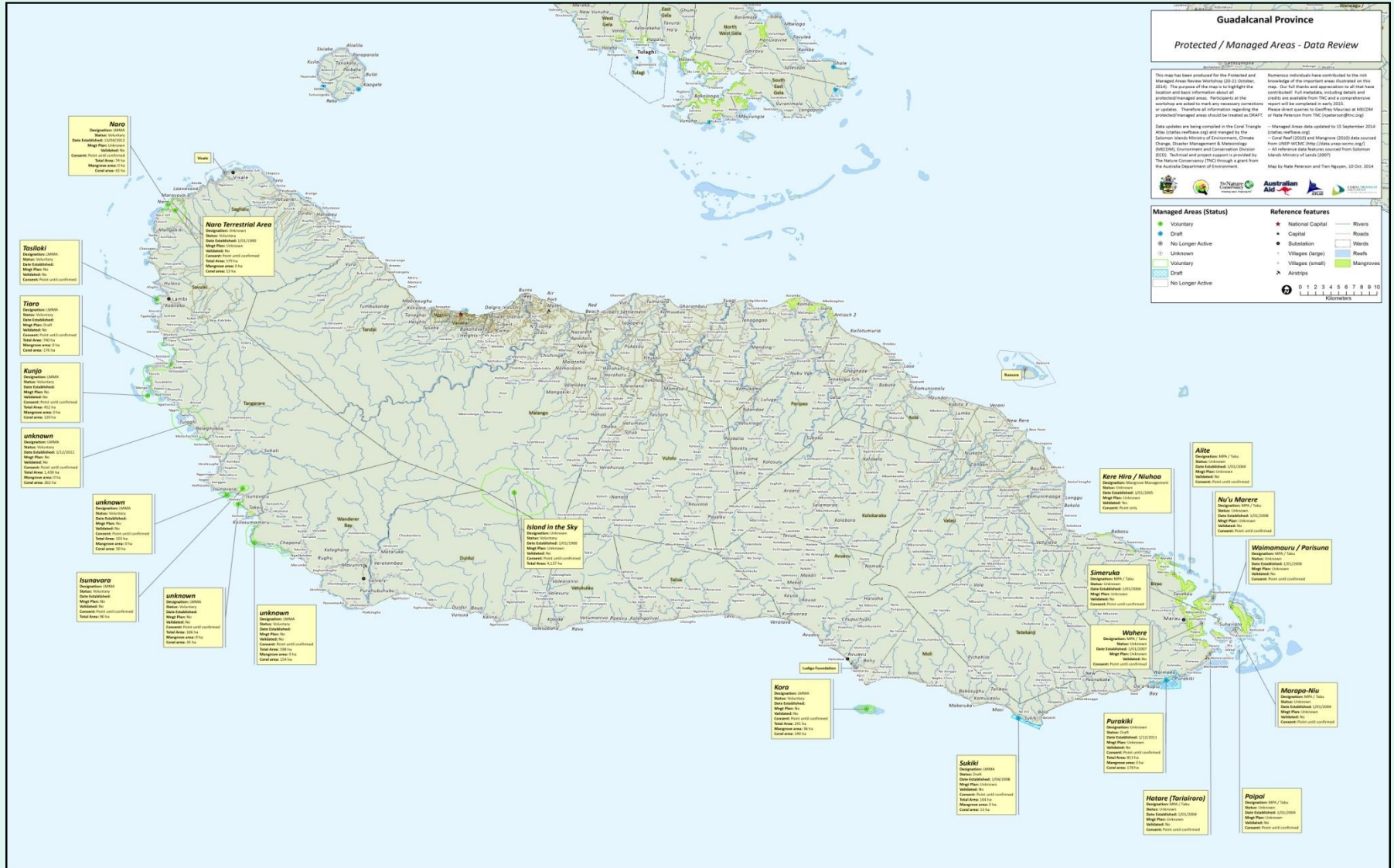
Spett-Moore, Richard Hamilton, Nate Peterson, Edward Game, Willie Atu, Jimmy Kereseka, John Pita, Peter Ramohia and Catherine Siota



POLICY & GUIDANCE



Data & Information



ARANVON COMMUNITY MARINE PARK (ACMP) RANGERS

Capacity & Awareness



Journey's Lessons:

START, FINISH & MAINTAIN

- ✓ Momentum – building on Community, Provinces and Sector strengths
- ✓ Simple/relevant collaborations, networks and partnerships
- ✓ Women, youths, churches and chiefs – roles of different authorities within different communities
- ✓ Revising the Plan – Monitoring
- ✓ Mentors/Inspirers (LEADERSHIP)



Ways ahead

- *Review National Plan/ framework*
- *Support to Provinces and Communities (groups)*
- *Outreach – Sectors (social/developmental sectors)*
- *Perfect the skill-sets, approaches, partnerships for working with communities*

• **LEAD!!**

Tangio tumas!!

