



**Community-Based Fisheries Co-Management  
WWF-SI Sustainable Coastal Communities Programme  
Community Based Resource Management National Symposium  
2- 6<sup>th</sup> Oct 2017, Honiara**

# Sustainable Fisheries



# Sustainable Livelihoods

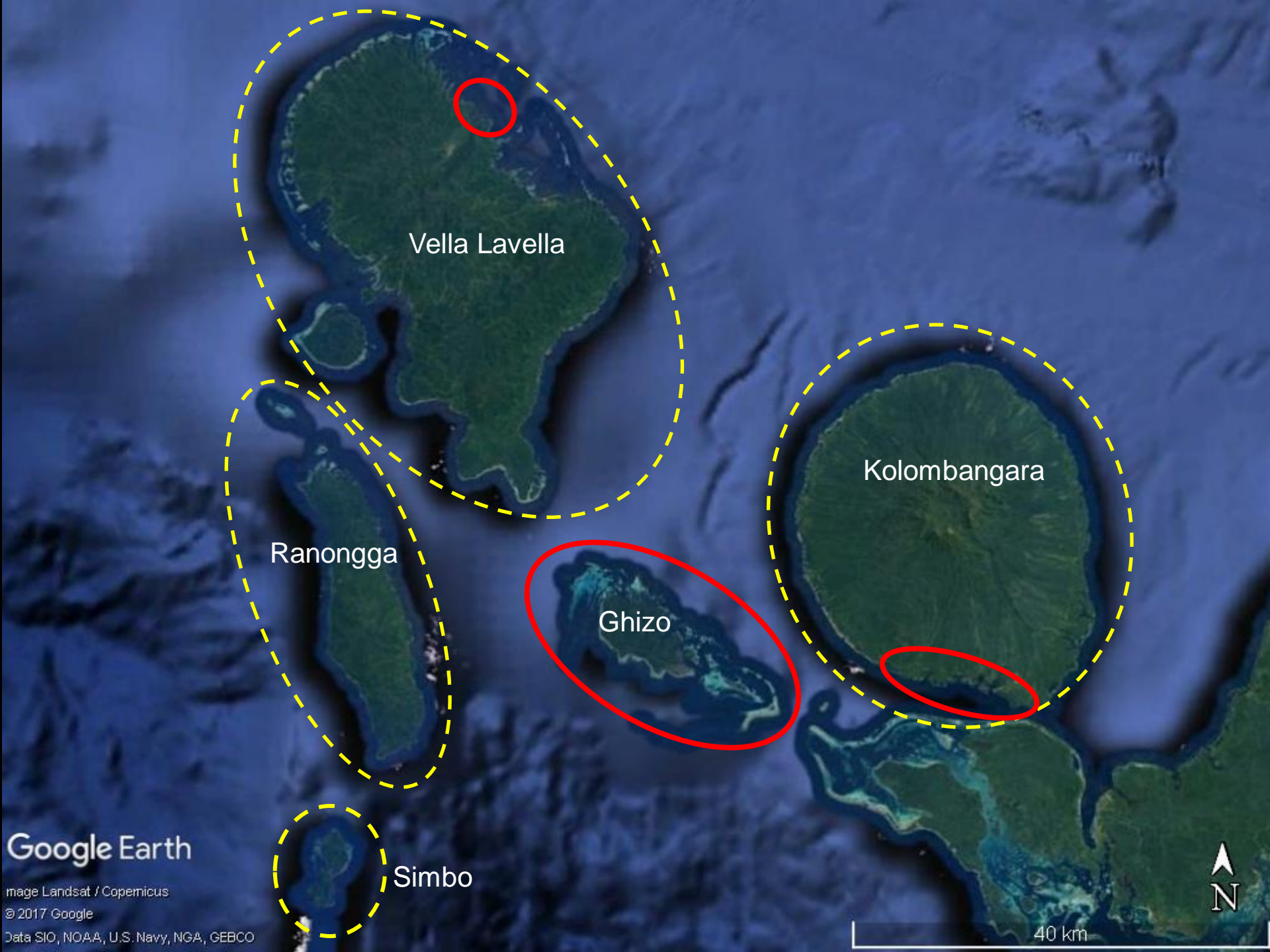
**PUBLIC-NOTICE**

- \* RING-CAKE \$1-00
- \* ROUGH-DONUTS \$1-00
- \* HOT TEA !!!

- MILO } \$1-00  
- M / TEA } CUP  
- L / TEA }  
come n enjoy a hot  
the day with a cake







Vella Lavella

Ranongga

Ghizo

Kolombangara

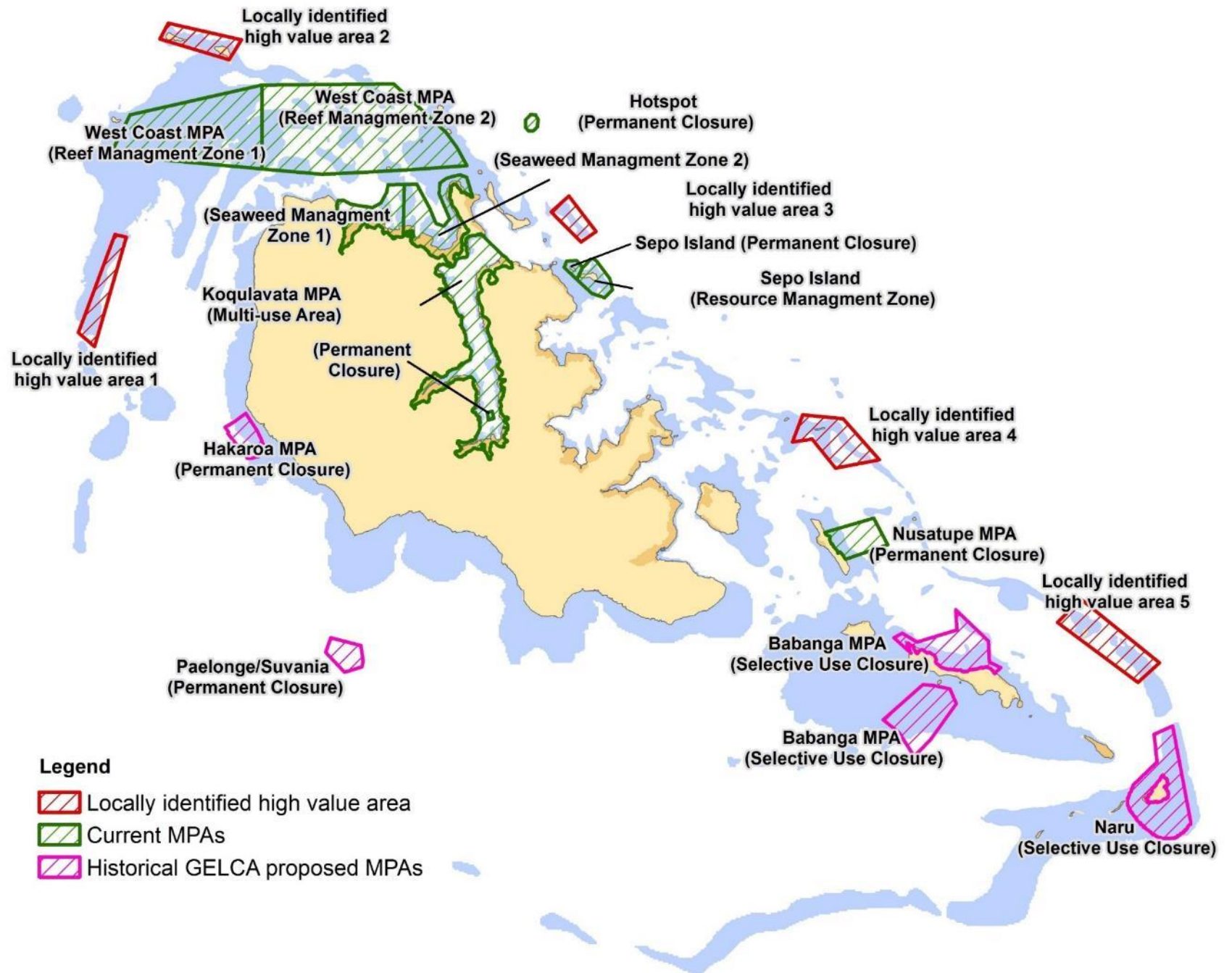
Simbo

Google Earth

Image Landsat / Copernicus  
© 2017 Google  
Data SIO, NOAA, U.S. Navy, NGA, GEBCO

40 km



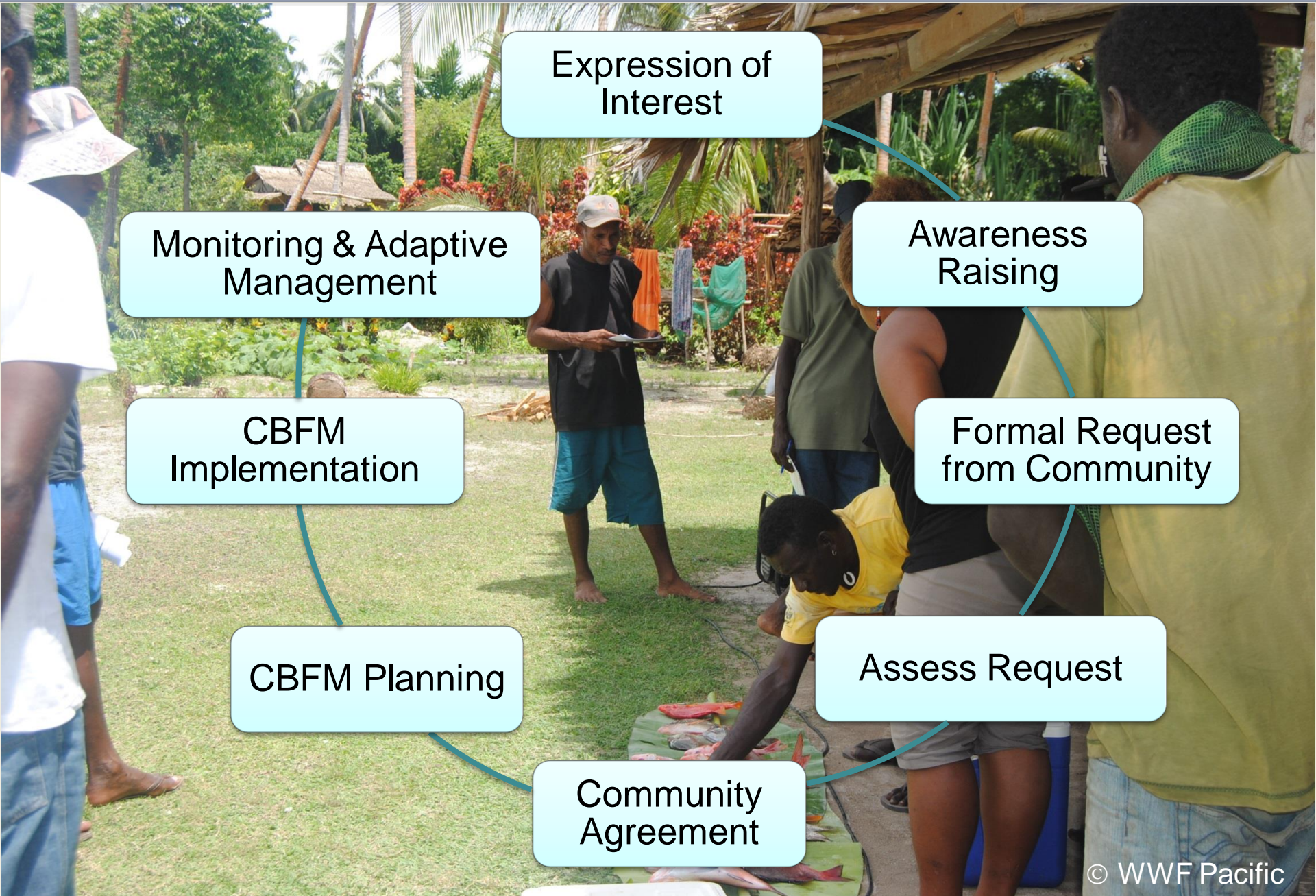


# Broader WWF – CBFM Approach



WORLD TEACHERS  
DAY 2014

# Broader WWF – CBFM Approach







**Engagement – ‘Rafters’ (iFADs)**

# Engagement – ‘Rafters’ (iFADs)



# Engagement - Innovation - SPS







## Community Fishers Discussions

# Fisheries – Women



# CBFM Planning by Communities



# Community Based Fisheries co-Management and Beyond





# LEANA HOLA

**Australian  
Aid**



**JOHN WEST**