



National Resource Management Symposium 2017
October 02nd – 06th
Heritage Park, Honiara

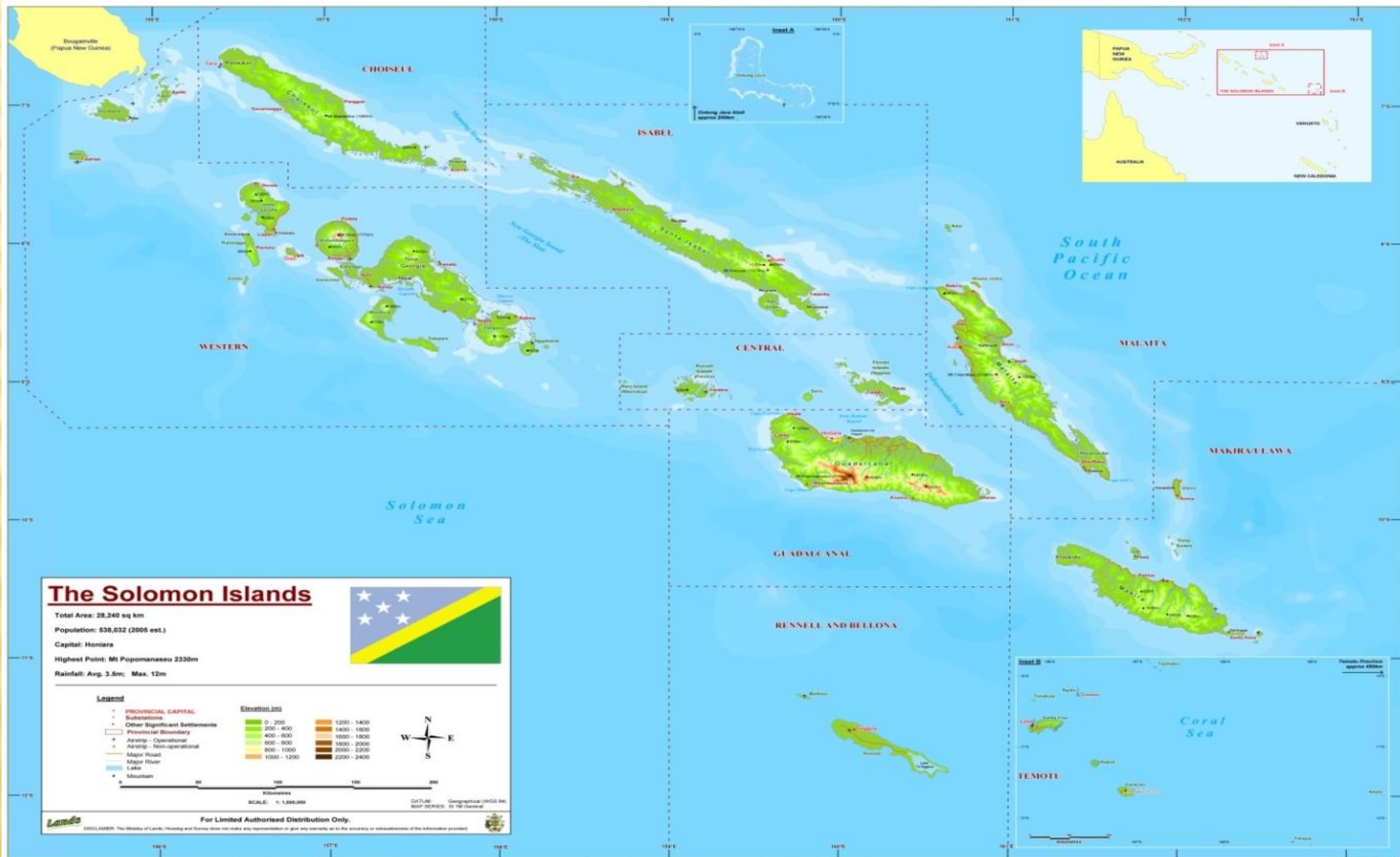
“Connecting People with Nature”: A Decade of Learning

Vaeno Vigulu, PhD
Permanent Secretary
Ministry of Forestry and Research

CONTENT

1. Solomon Islands
2. Forest Resource
3. Legislation
4. Ministry of Forestry and Research
5. Regulation and Practice
6. Production and Value
7. Status of Island forests
8. Way forward
9. Summary

1. SOLOMON ISLANDS



SOLOMON ISLANDS

- ✘ A double chain archipelago in South-West Pacific located between longitude 155 and 170 and latitude 5 to 12 south
- ✘ Consists of 990 islands with a total land area of ~28,000 square kilometres
- ✘ ~85% of land is customary owned
- ✘ Population of Solomon Islands is ~600,000
- ✘ Over 80 % lives in the rural areas

2. FOREST RESOURCE

- ✘ Rich vegetation with ~80% or ~2.2 million hectares covered with forests
- ✘ 20% is harvestable with ~16 million m³ and ~250,000m³ sustainable/allowable cut per year
- ✘ Some protected areas
- ✘ Rich flora and fauna and some endemic to Solomon Islands
- ✘ Six vegetation types

(a) Grassland and other non-forest areas



(b) Saline swamp forest



(c) Freshwater swamp and Riverine forest



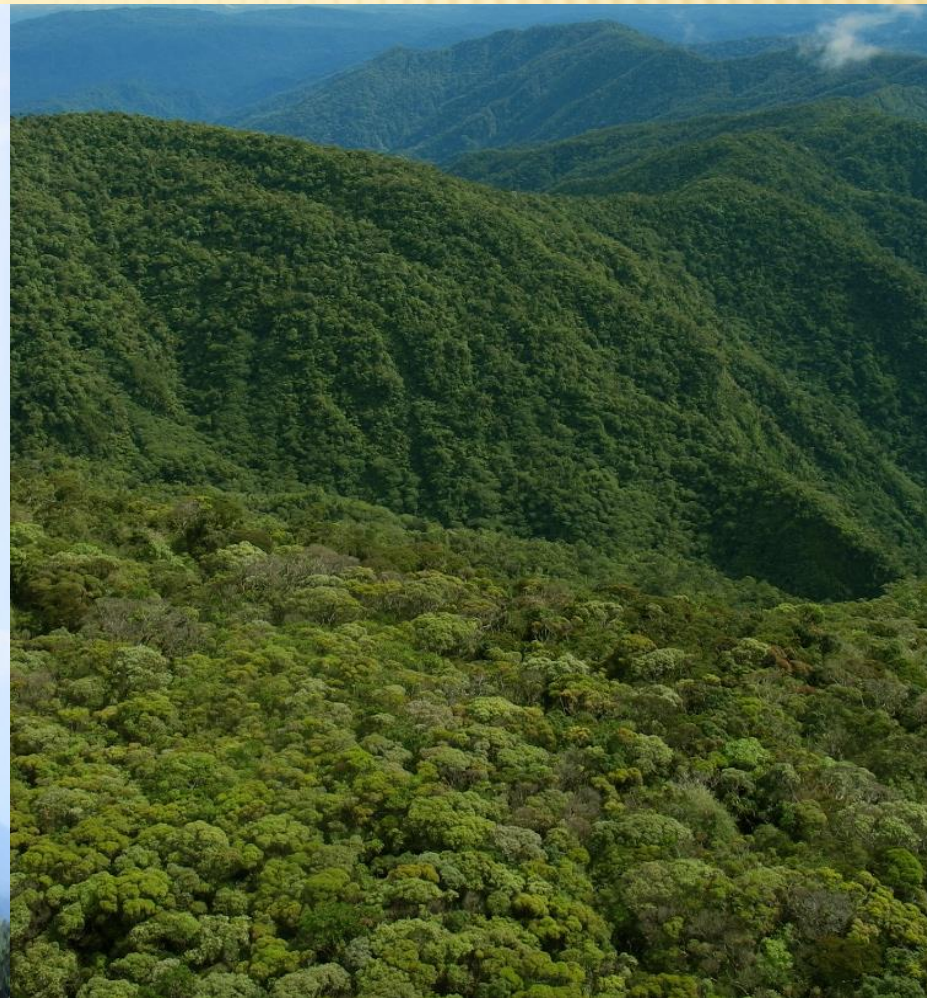
(d) Lowland rainforest



(e) Hill forests



(f) Montane forests

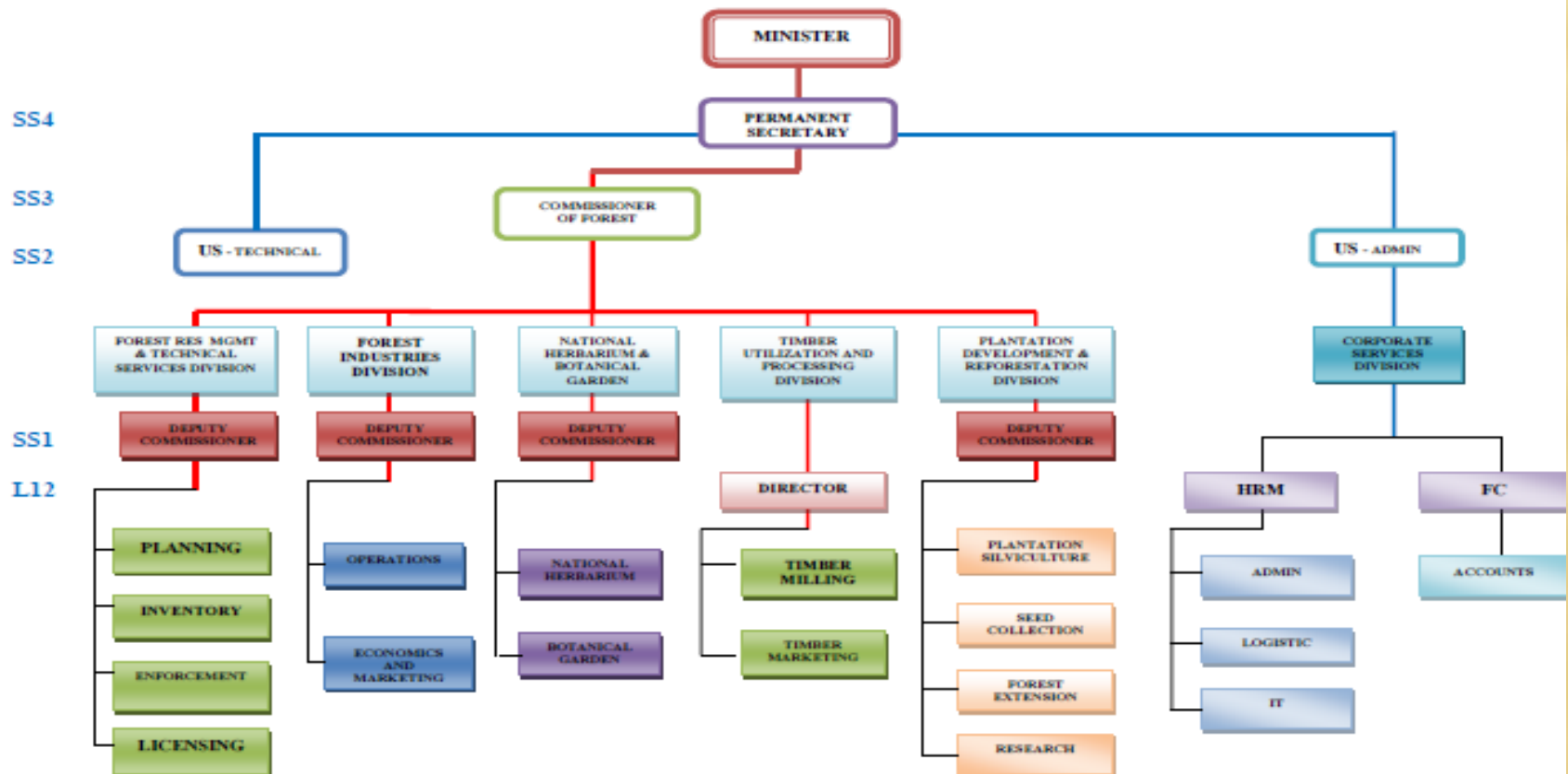


3. LEGISLATION

- ✘ Forest Resources and Timber Utilization Act (CAP 40)
(Forestry Act)
 - + Published and Enforced in 1969
 - + Amendment 1996

CURRENT STRUCTURE

MINISTRY OF FOREST AND RESEARCH-ORGANISATIONAL STRUCTURE



4. MINISTRY OF FORESTRY AND RESEARCH

Policy Statement:

The harvesting of forest resources at a sustainable rate with fair returns to landowners and the government and the replanting and care for the environment and including promotion of all protected areas and to ensure Solomon Islands receive fair return on the export of round logs that reflect true international market value.

Vision:

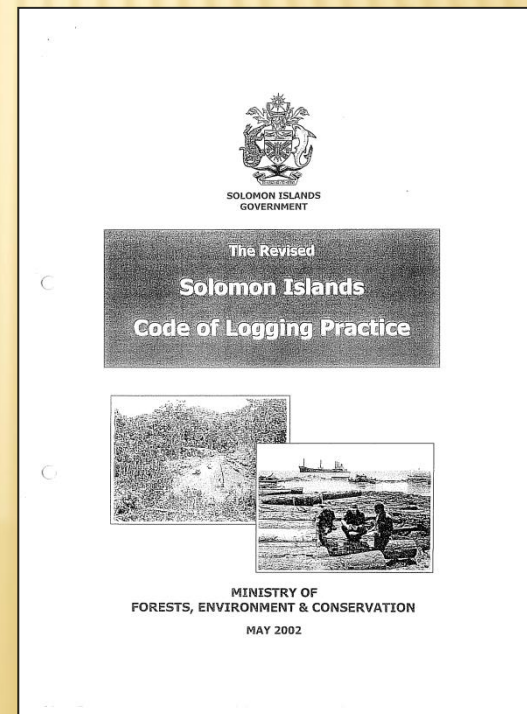
To become a highly respected forest agency with the professional competency to manage the forest resources of Solomon Islands in perpetuity.

Mission:

To utilize, conserve and manage the forest resources for the continuing benefit to the environment and the people of Solomon Islands.

5. REGULATION AND PRACTICE

- ✘ Forest Regulations 2005
- ✘ Solomon Islands Code of Logging Practice – Revised 2002

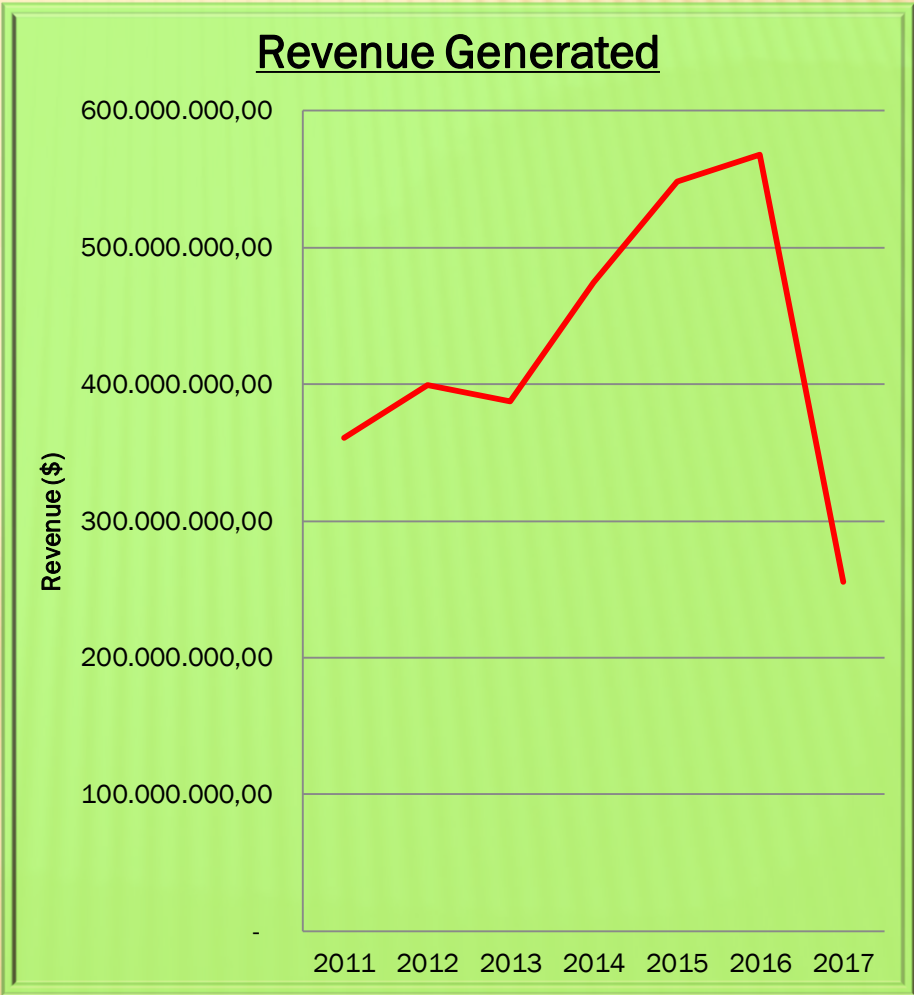
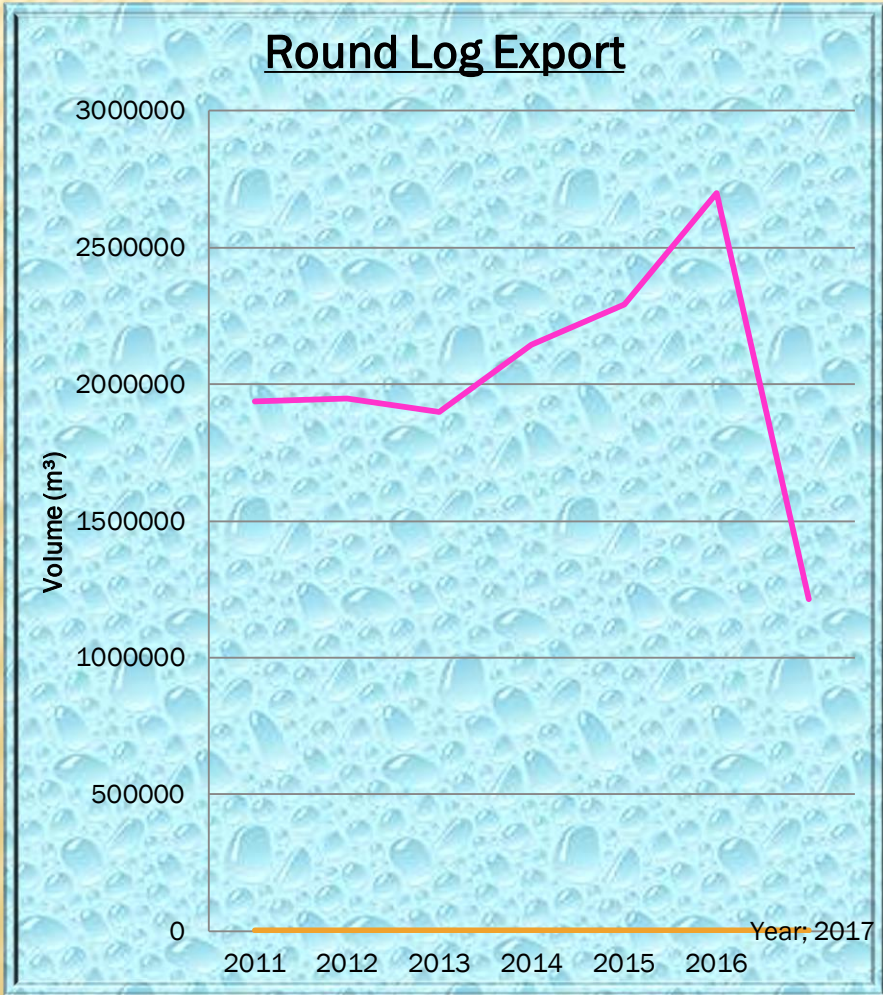


6. PRODUCTION AND VALUE

- ✘ Main export is timber (70%) & others: copra, fish, palm oil, gold
- ✘ Logging currently contributes 50% to 60% of Government revenue annually thru timber export and employment
- ✘ Exporting an average of 2.2 million m³ of round logs for the last 6 years

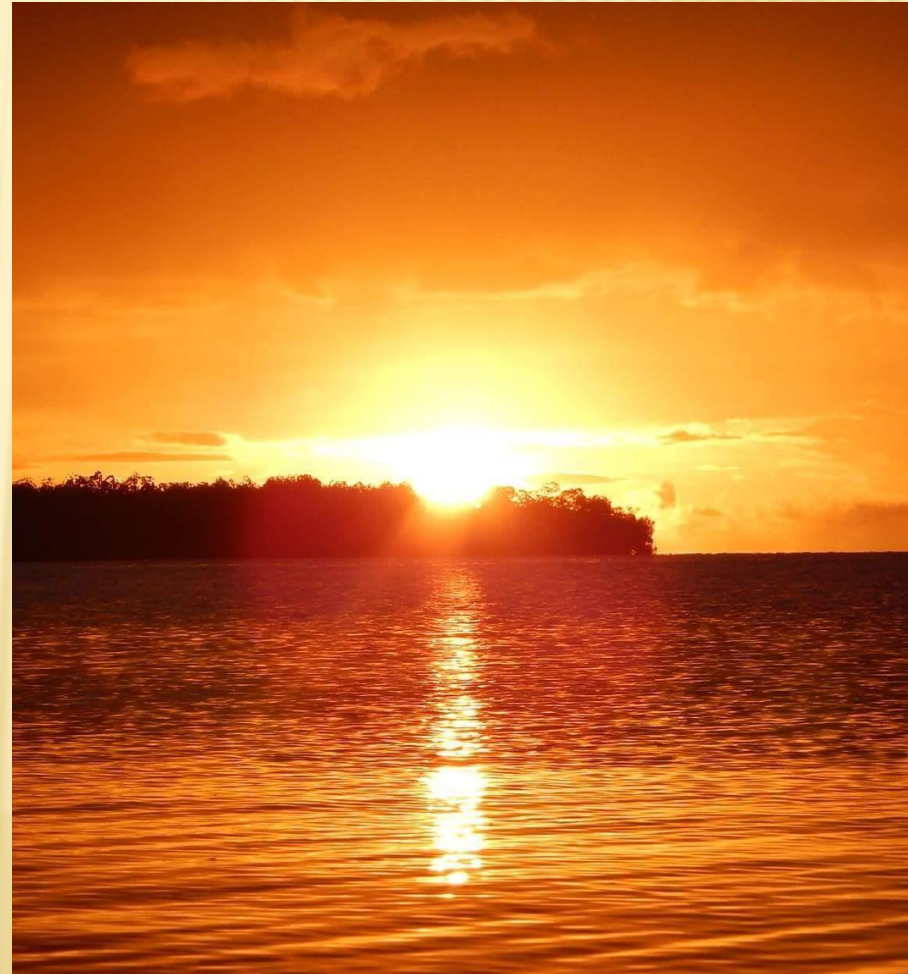
LOG EXPORT (M³) BY PROVINCE (MOFR DATA)

YEAR	PROVINCE									TOTAL
	CENTRAL	CHOISEUL	GUADALCANAL	ISABEL	MAKIRA	MALAITA	RENBEL	TEMOTU	WESTERN	m ³
2008	63,050	160,939	162,839	333,053	179,335	190,313	0	7,946	568,052	1,665,527
2009	0	127,649	114,684	342,450	188,244	156,640	0	0	456,959	1,386,626
2010	0	104,596	108,622	444,982	250,580	241,453	0	0	629,947	1,780,179
2011	4,000	136,019	149,161	759,563	207,900	147,880	28,500	0	749,580	2,182,604
2012	21,700	139,479	187,451	678,647	264,249	49,364	99,900	0	693,388	2,134,179
2013	0	186,305	156,235	668,733	197,744	84,800	156,888	0	843,904	2,294,609
2014	4,000	287,000	143,451	733,313	156,949	58,436	127,000	27,300	983,422	2,520,871
2015	27,500	409,316	190,867	491,564	118,905	147,516	202,200	39,050	1,186,017	2,812,935
2016	23,323	368,263	314,548	549,884	124,711	234,960	208,950	55,870	863,336	2,743,845
Jun-17	17,550	234,345	186,485	339,259	63,102	116,977	82,600	23,100	433,146	1,496,564



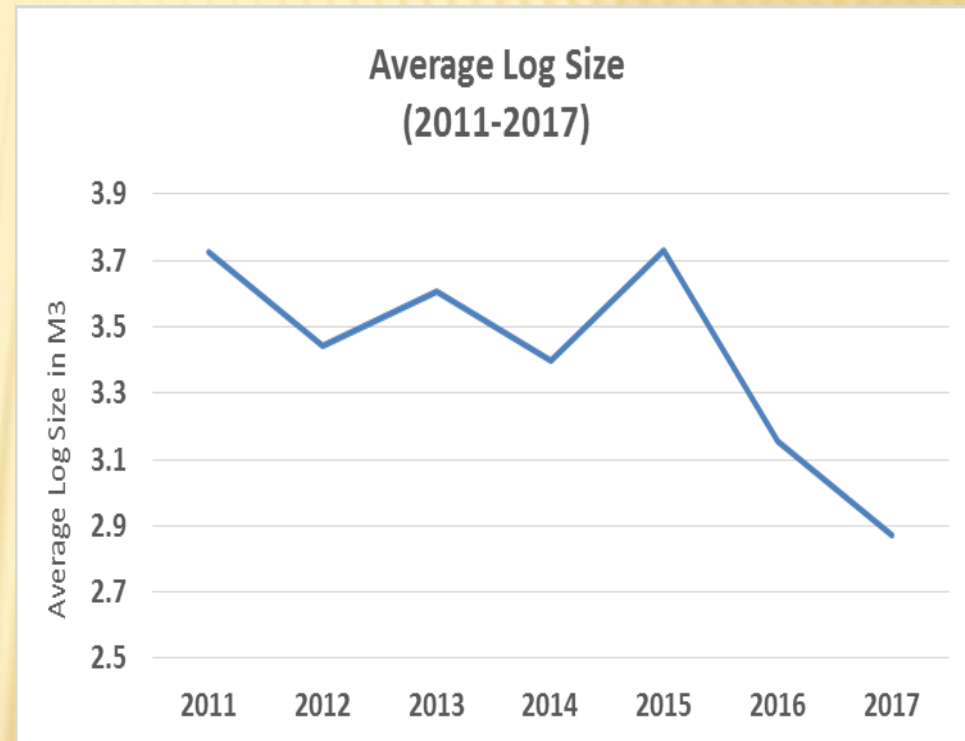
7. STATUS OF ISLAND FORESTS

- ✘ Sunset Industry – Logging:
 - + 5 - 6 times unsustainable
 - + Forest cover declined from 90% in 1990s to 78% in 2015 (Agriculture, Mining, growth centres etc.).
 - + In 5 years time, steep decline of round logs export

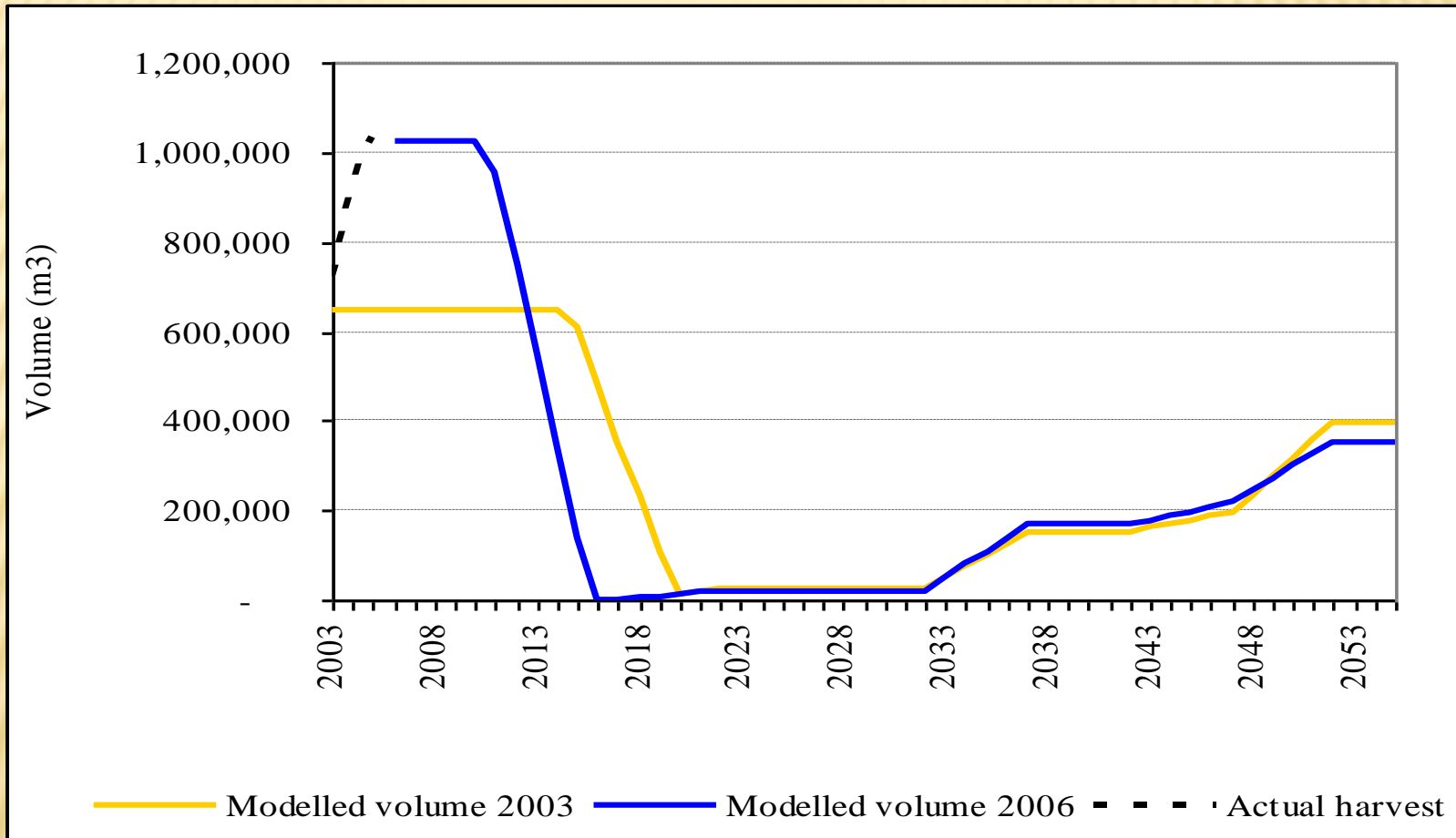


✘ Sunset Industry

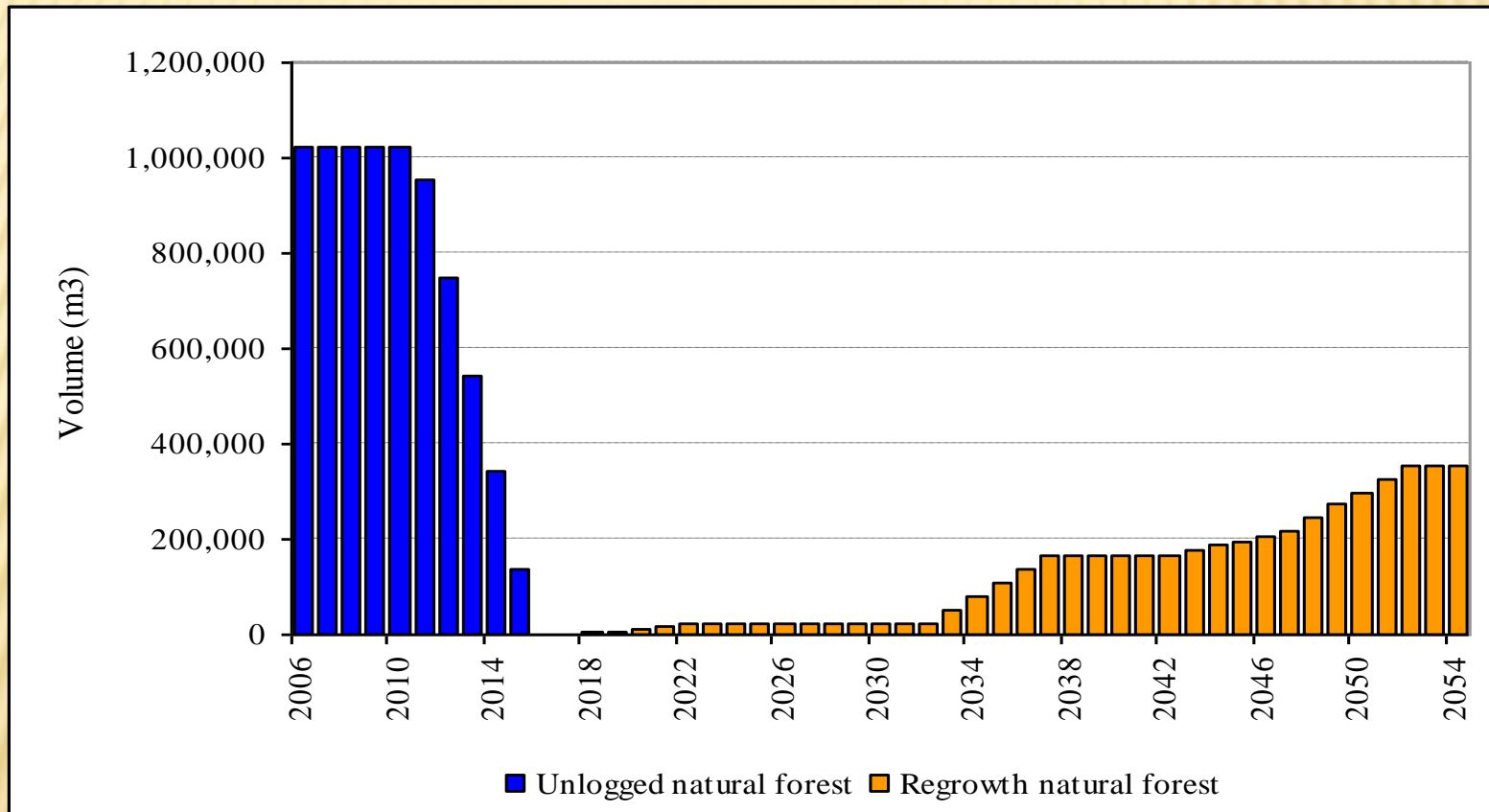
- ✘ Smaller logs with average volume of 2.8m³ per log
- ✘ Buffer zones are being:
 - + Threatened
 - + harvested illegally
- ✘ Protected forests (≥400m asl) are threatened through the demand for revenue generation



WOODFLOW MODELS (FMP)

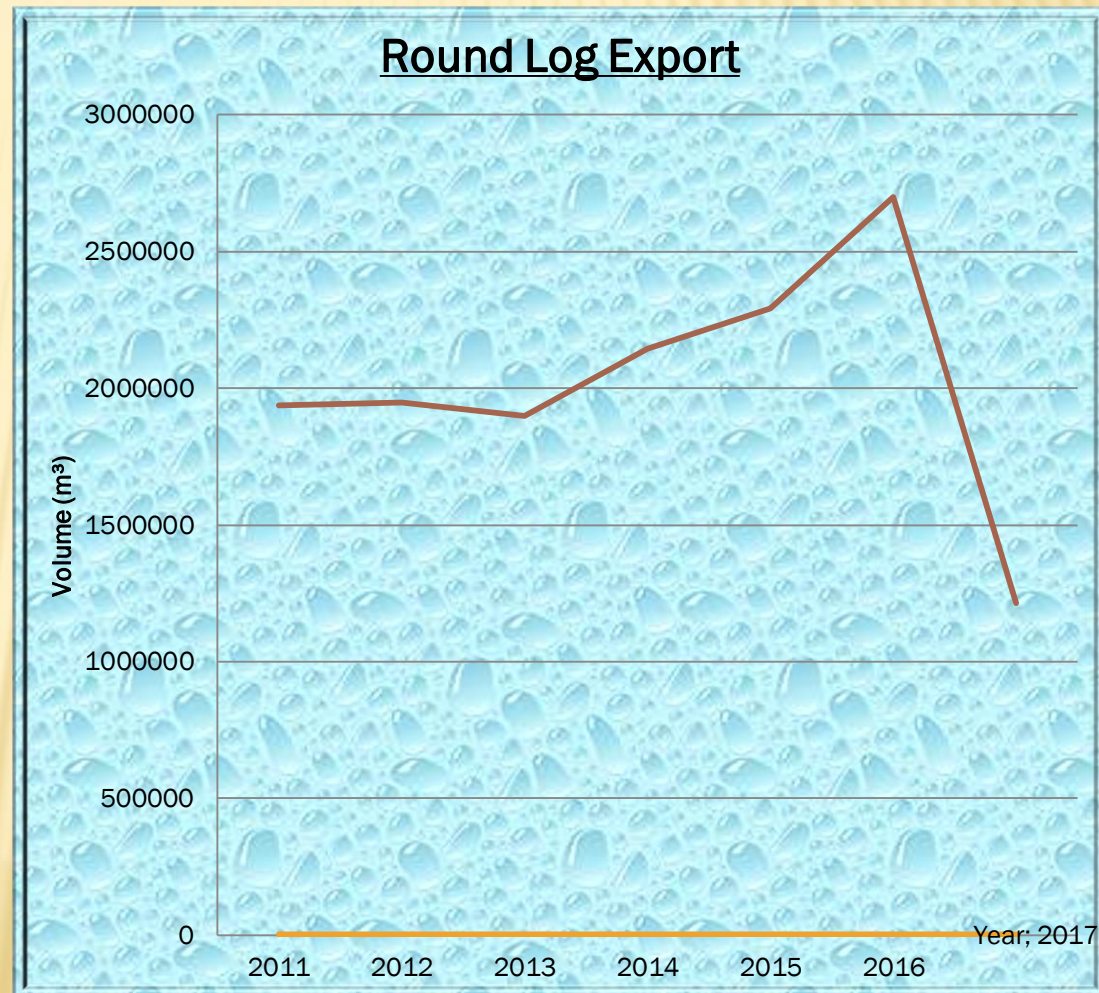


ASSUMING NO RE-ENTRY (FMP)



ACTUAL ROUND LOG EXPORT

- ✘ Instead of descending, round logs export increased
- ✘ 2016 Round log export was the peak and history
- ✘ Export for 2017 is predicted to be similar to 2016



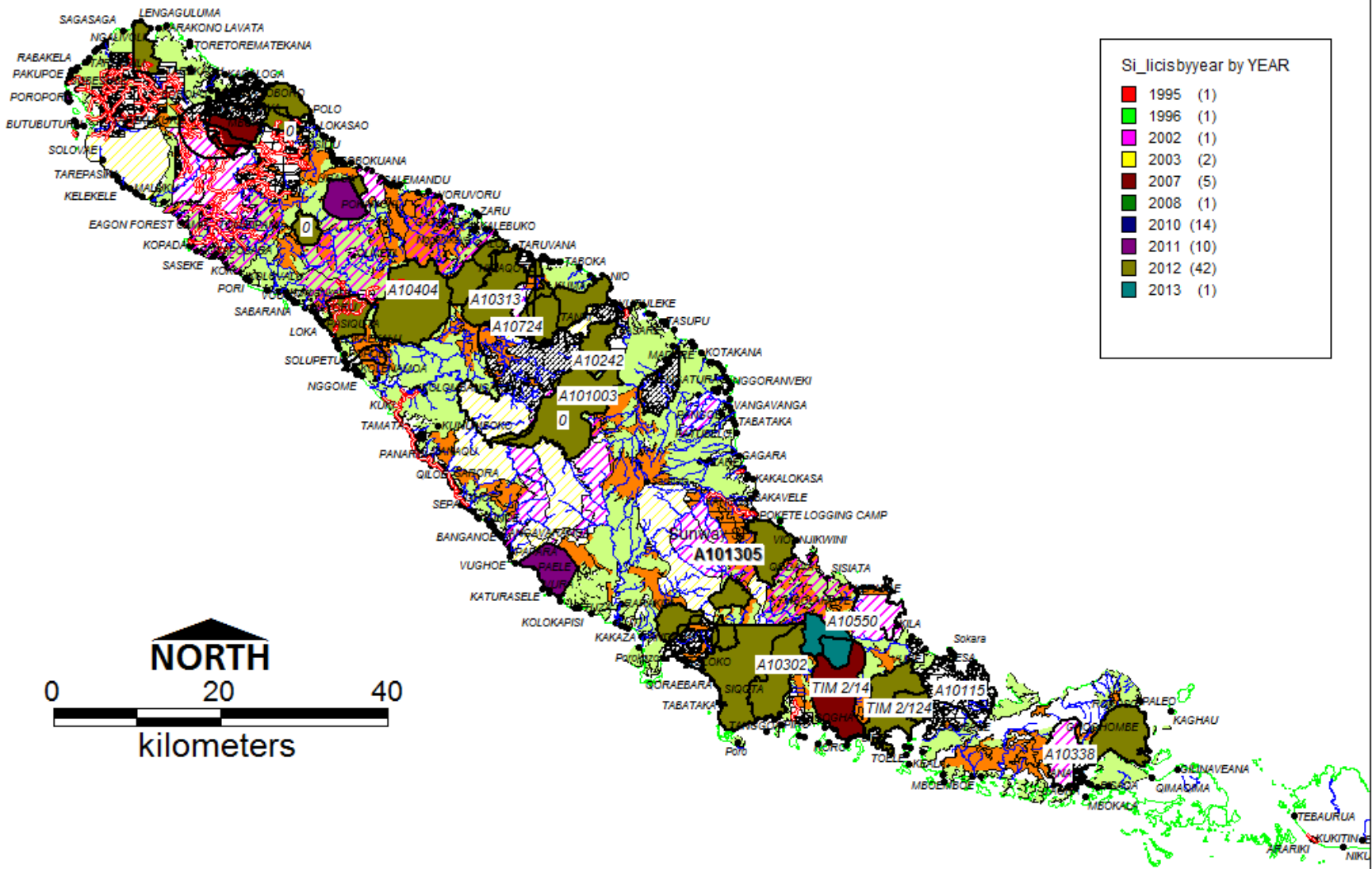
OPERATIONAL LICENCE BY PROVINCE BY YEAR

<u>YEAR</u>	<u>PROVINCE</u>									<u>TOTAL</u>
	CENTRAL	CHOISEUL	GUADALCANAL	ISABEL	MAKIRA	MALAITA	RENBEL	TEMOTU	WESTERN	
2010	0	9	6	21	9	16	0	0	31	92
2011	1	9	7	26	13	13	1	0	25	95
2012	2	9	8	29	15	14	2	0	28	107
2013	0	16	10	30	14	6	3	0	39	118
2014	0	19	11	30	13	8	4	1	46	132
2015	1	27	11	28	14	14	5	1	50	151
2016	1	28	15	29	13	21	9	1	39	156
Jun-17	2	23	18	28	11	13	3	1	35	134

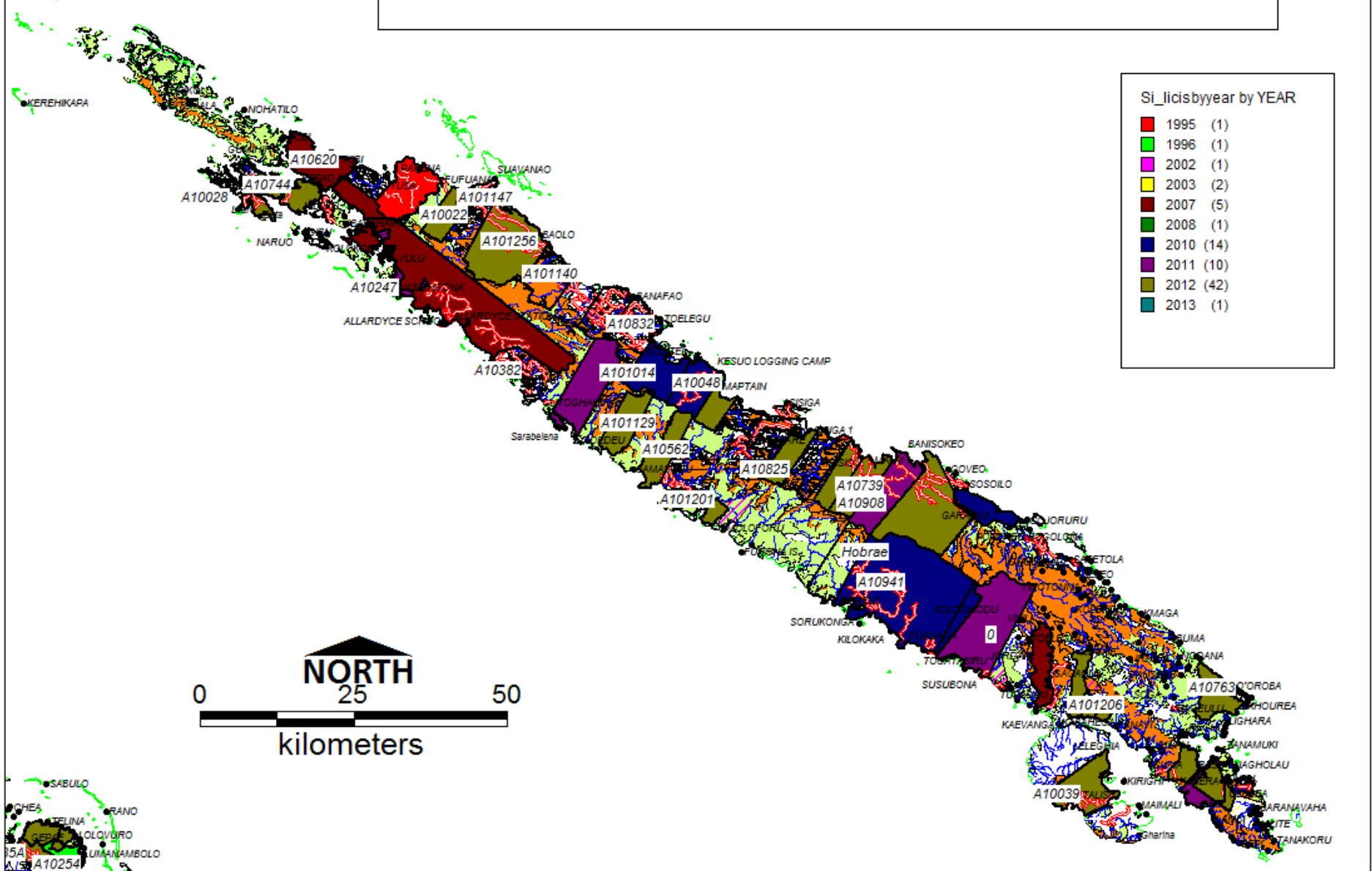
2013 LOGGING CONCESSIONS UPDATE - CHOISEUL PROVINCE

Si_licisbyear by YEAR

Red	1995	(1)
Green	1996	(1)
Pink	2002	(1)
Yellow	2003	(2)
Brown	2007	(5)
Dark Green	2008	(1)
Blue	2010	(14)
Purple	2011	(10)
Olive	2012	(42)
Dark Blue	2013	(1)



2013 LOGGING CONCESSIONS UPDATE - ISABEL PROVINCE



Si_licisbyyear by YEAR

1995	(1)
1996	(1)
2002	(1)
2003	(2)
2007	(5)
2008	(1)
2010	(14)
2011	(10)
2012	(42)
2013	(1)

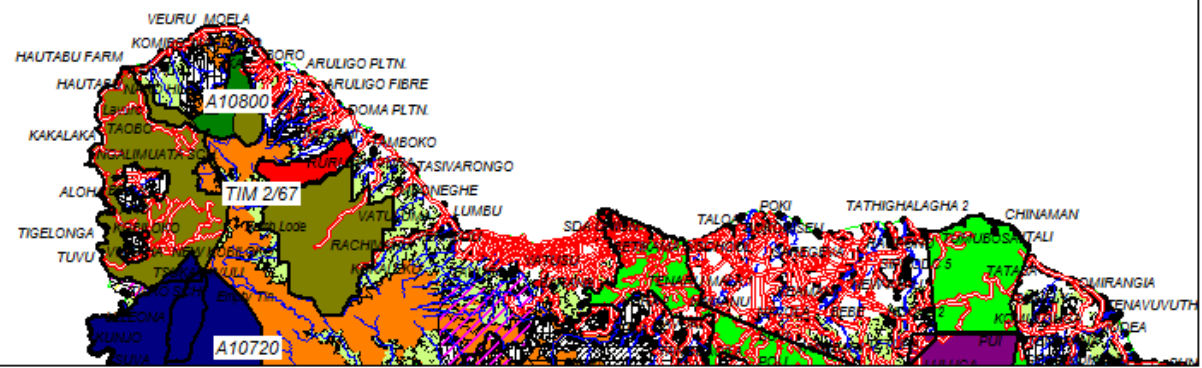
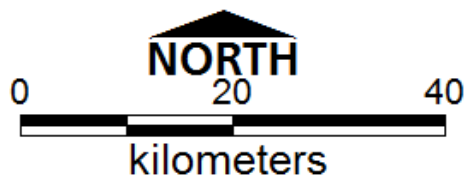
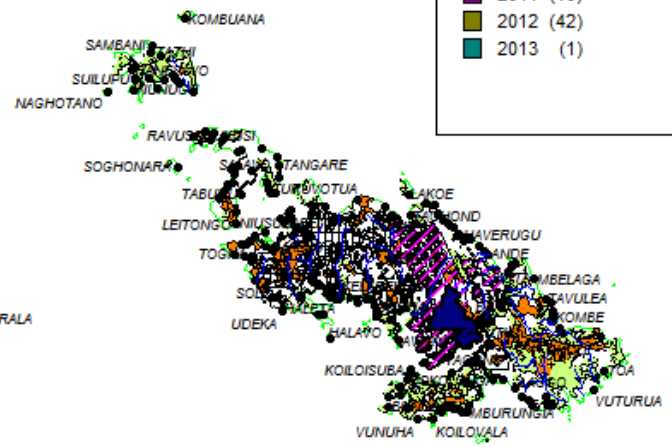
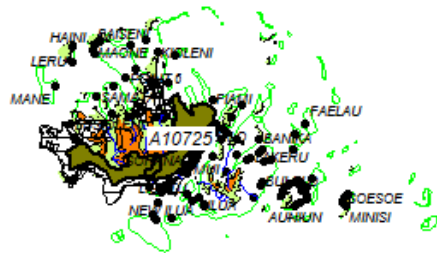


SABULO
HEA
TELINA
ORANO
REBIA
OLOVORO
LIMANAMBOLO
A10254

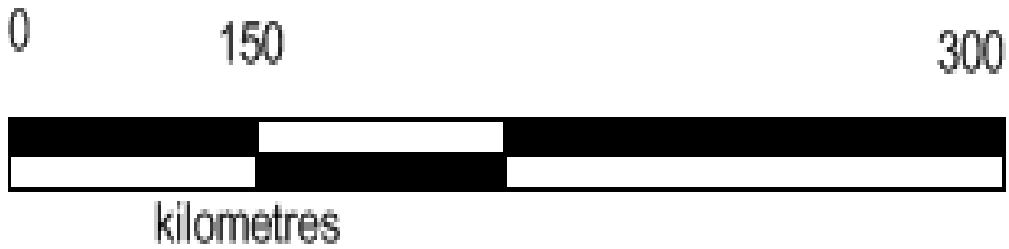
2013 LOGGING CONCESSIONS UPDATE - CENTRAL PROVINCE

Si_licisbyyear by YEAR

1995	(1)
1996	(1)
2002	(1)
2003	(2)
2007	(5)
2008	(1)
2010	(14)
2011	(10)
2012	(42)
2013	(1)

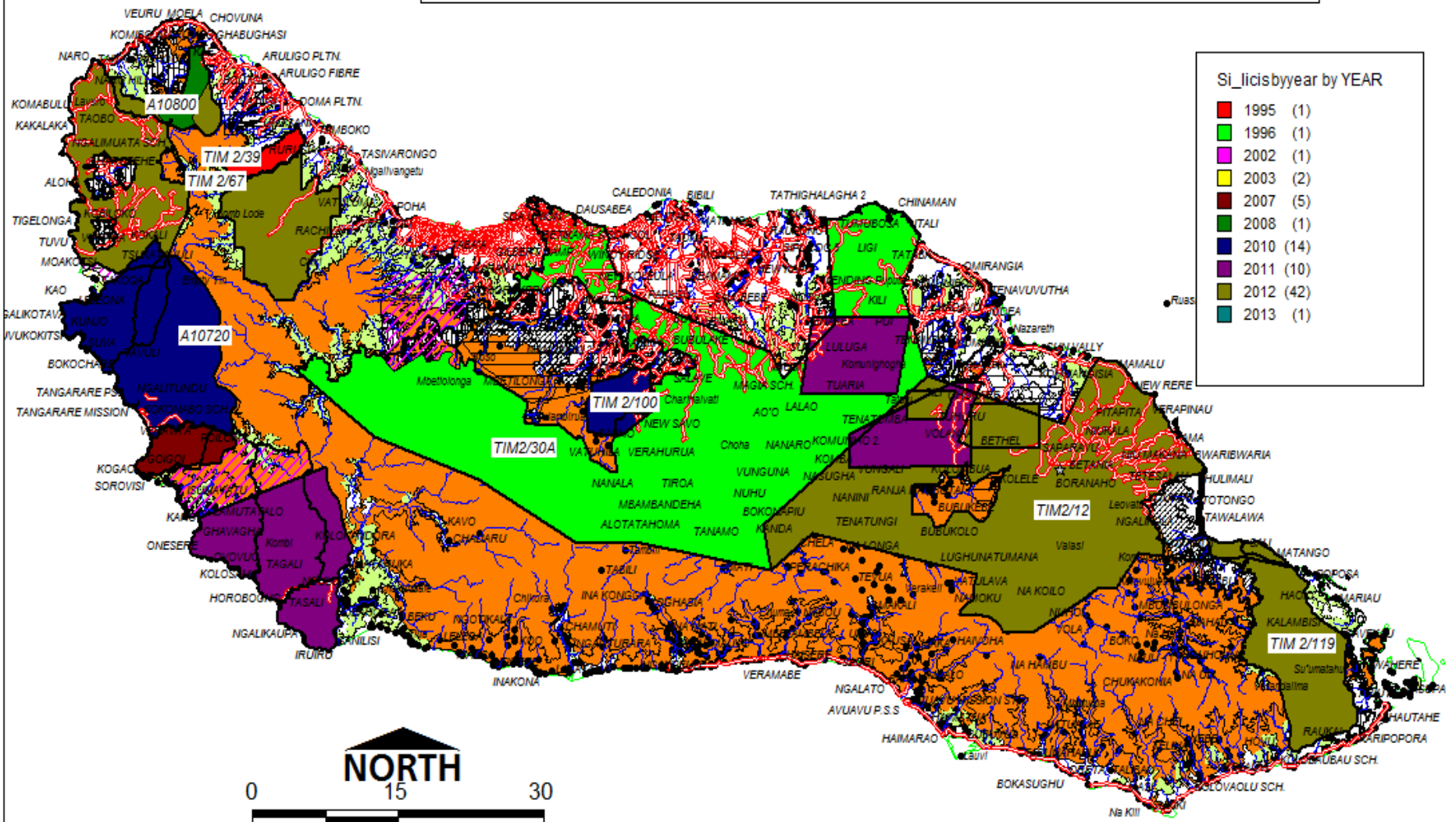


2013 LOGGING CONCESSIONS UPDATE - RENBELL PROVINCE



Si_currentlicence10_year by Licence1	
	(49)
0	(36)
A10003	(4)
A10007	(6)
A10022	(8)
A10028	(8)
A10030	(8)
A10039	(1)
A10040	(8)
A10044	(3)
A10048	(8)
A101001	(4)
A101003	(4)
A101010	(4)
A101012	(4)
A101014	(1)
A101018	(4)
A10102	(8)
A101020	(8)
A101021	(4)
A101023	(4)
A101031	(4)
A101034	(4)

2013 LOGGING CONCESSIONS UPDATE - GUADALCANAL PROVINCE



Si_licisbyyear by YEAR

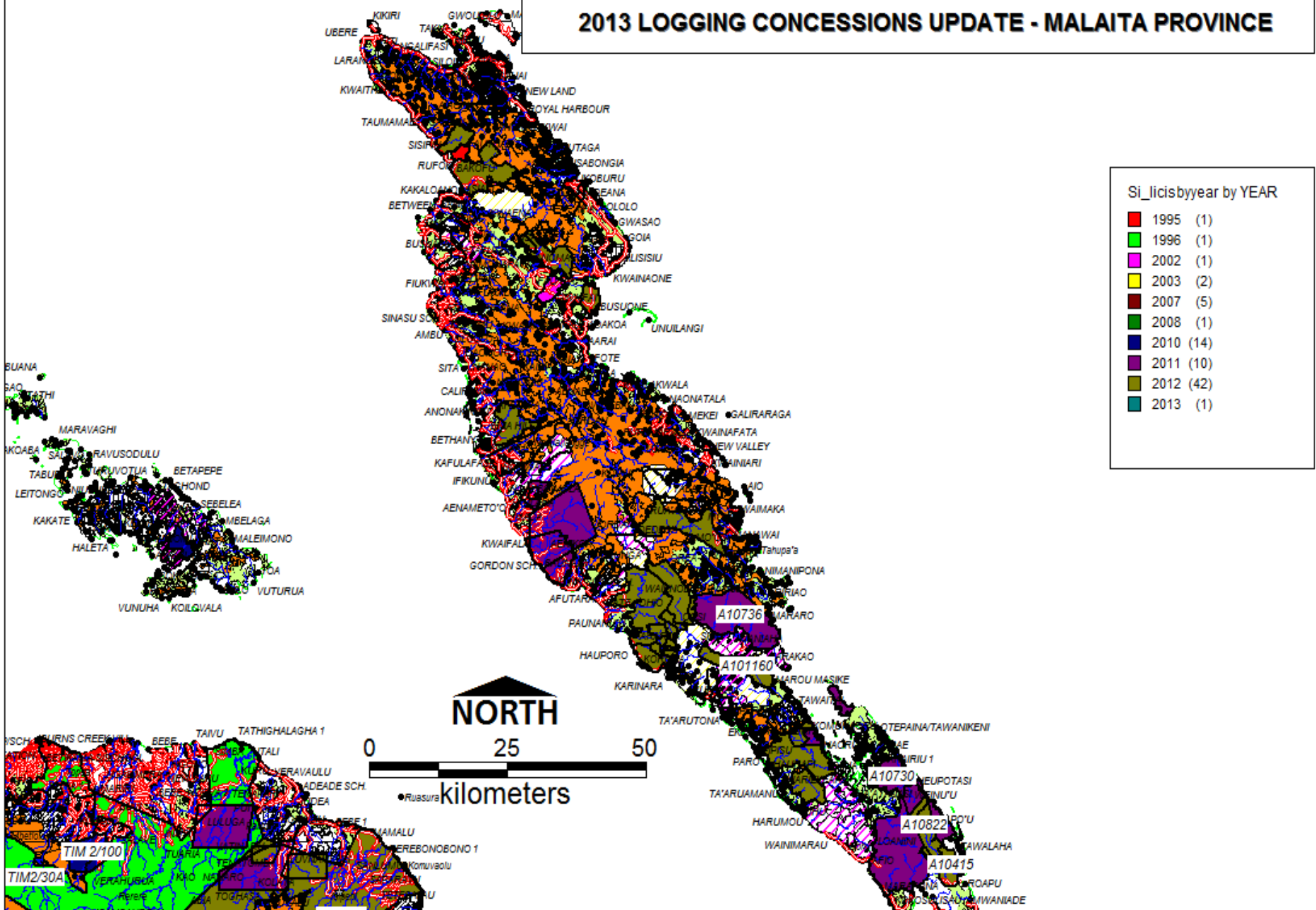
1995	(1)
1996	(1)
2002	(1)
2003	(2)
2007	(5)
2008	(1)
2010	(14)
2011	(10)
2012	(42)
2013	(1)



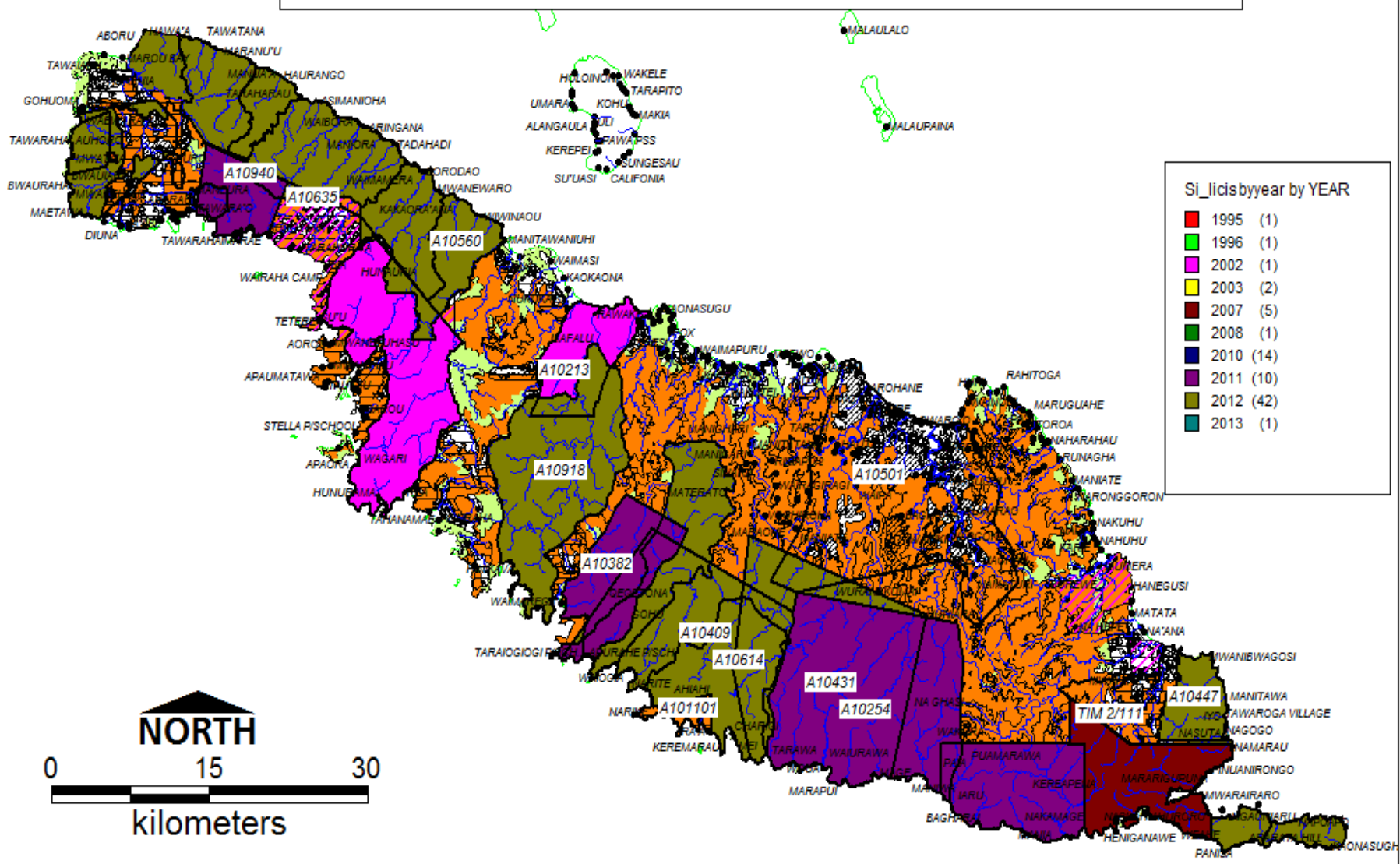
2013 LOGGING CONCESSIONS UPDATE - MALAITA PROVINCE

Si_licisbyyear by YEAR

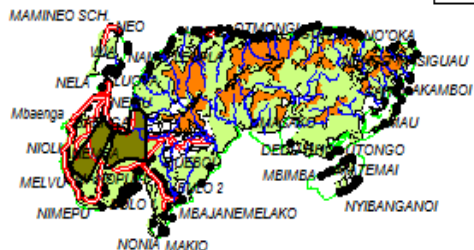
- 1995 (1)
- 1996 (1)
- 2002 (1)
- 2003 (2)
- 2007 (5)
- 2008 (1)
- 2010 (14)
- 2011 (10)
- 2012 (42)
- 2013 (1)



2013 LOGGING CONCESSIONS UPDATE - MAKIRA PROVINCE

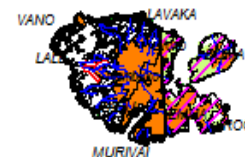
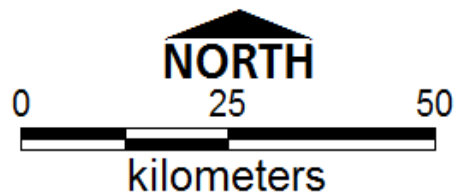
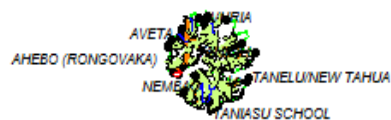


2013 LOGGING CONCESSIONS UPDATE - TEMOTU PROVINCE



Si_licisbyyear by YEAR

1995	(1)
1996	(1)
2002	(1)
2003	(2)
2007	(5)
2008	(1)
2010	(14)
2011	(10)
2012	(42)
2013	(1)



8. WAY FORWARD

- ✘ Review of the Forest Resources and Timber Utilization Act
- ✘ Sunrise industry - Reforestation
 - + Kolombangara Forest Products Limited
 - + Eagon Pacific Plantation Limited
 - + Landowners reforestation programme
- ✘ Natural Regeneration and enrichment programme
- ✘ Non-timber Forest Products
- ✘ REDD+ Initiative

MIX SPECIES PLANTATION



SINGLE SPECIES PLANTATION



SUN RISE INDUSTRY

✘ Natural Regenerations and Enrichment Management



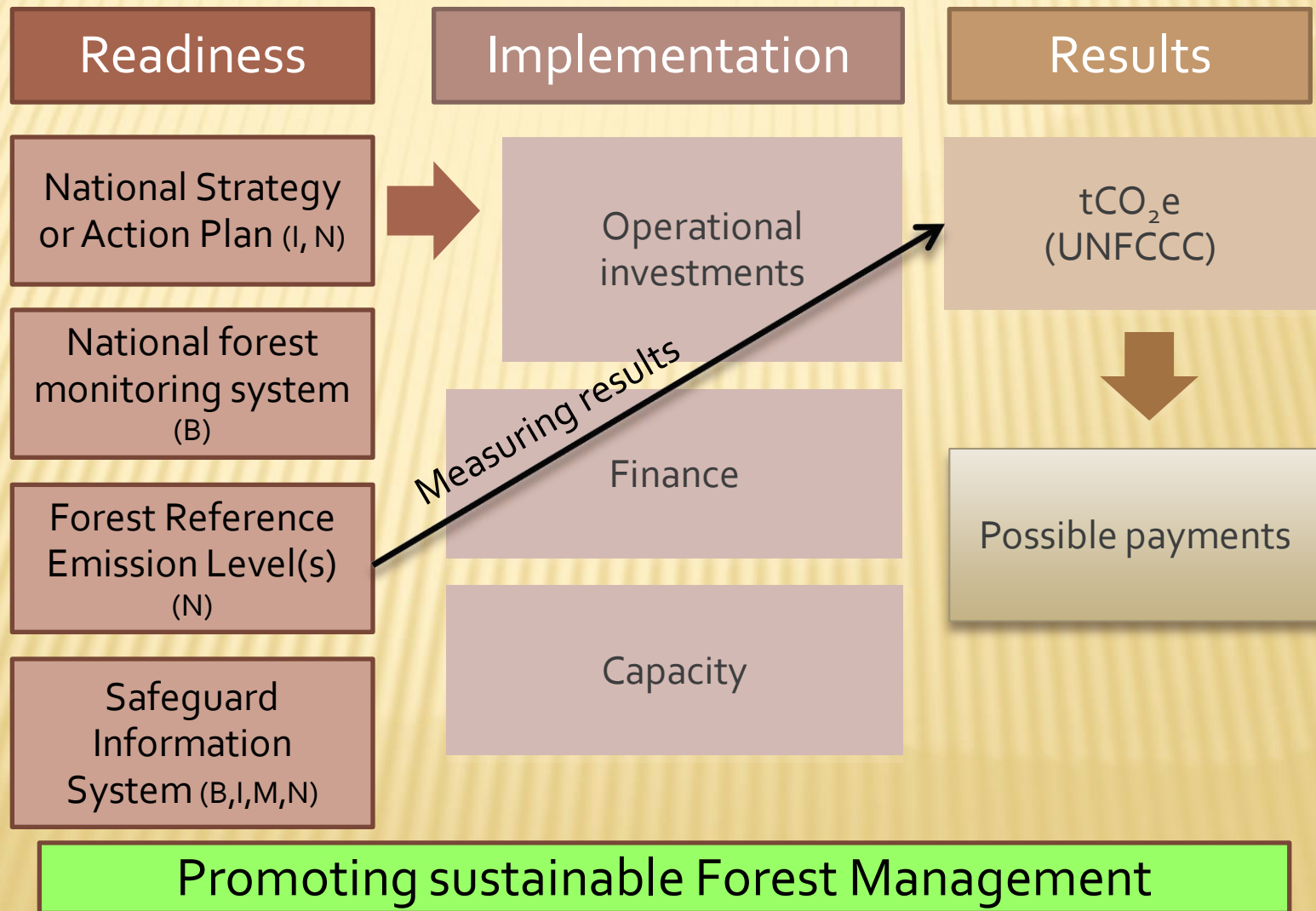
Non-timber Forest Products

- ✘ Pharmaceutical studies
 - + Currently in progress with collaborators from Taiwan, Japan and South Korea with the National Herbarium and Botanical Garden

- ✘ Survey of Solomon Islands Flora
 - + Published Flora of the Solomon Islands
 - + Solomon Islands Fern book coming soon

- ✘ Ecosystem services
 - + Botanical gardens
 - + National parks
 - + Arboretum

REDD+ INITIATIVE- 3 PHASES



Where is Solomon Islands in REDD+?

REDD+ Strategy

ERPD

Phase 1:
Readiness
(Preparation/
Strategies)



Phase 2:
Implementation
of Strategies
and
Investments

Phase 3:
Results-Based
Payment

Full MRV system
required

FRL

Safeguards

9. SUMMARY

- ✘ Resource owners showed their increasing needs for income to support livelihood through logging
 - + Unsustainable
- ✘ Threat to biodiversity of flora and fauna of local and international significance
- ✘ Ministry began looking into other non-timber forest products to reduce reliance on the timber product and assist in addressing climate change
- ✘ Forestry Act (FRTUA 1969) review



LEANA HOLA

TAGIO TUMAS

THANK YOU