

Retail Prices of Fishes in Five Regions of Bangladesh

Wajed A Shah
Khandoker M. Shameem Kamal
Samaun Safa
Ishrat Jahan
Manuwara Azim
Jahangir Sarker

Working Paper No. 2001/4



Development of Sustainable Aquaculture Project
International Center for Living Aquatic Resources Management (ICLARM)
Bangladesh Office, Dhaka

August 2001

SH
206
P251
R47
2001

This study was sponsored through the support of the U.S. Agency for International Development (USAID) under the Research for Development of Sustainable Aquaculture Practices Project (Grant No. LAG G-00-95-00022-00) and the Development of Sustainable Aquaculture Project (Cooperative Agreement 388-A-00-00-00068-00). The opinions expressed herein are those of the authors and do not necessarily reflect the views of ICLARM or USAID.

SH
206
P251
R47
2001



#317

Retail Prices of Fishes in Five Regions of Bangladesh

Wajed A Shah
Khandoker M. Shameem Kamal
Samaun Safa
Ishrat Jahan
Manuwara Azim
Jahangir Sarker

Working Paper No. 2001/4



Development of Sustainable Aquaculture Project
International Center for Living Aquatic Resources Management (ICLARM)
Bangladesh Office, Dhaka

August 2001

0000015254

This study was sponsored through the support of the U.S. Agency for International Development (USAID) under the Research for Development of Sustainable Aquaculture Practices Project (Grant No. LAG G-00-95-00022-00) and the Development of Sustainable Aquaculture Project (Cooperative Agreement 388-A-00-00-00068-00). The opinions expressed herein are those of the authors and do not necessarily reflect the views of ICLARM or USAID.

Retail Prices of Fishes in Five Regions of Bangladesh

During 1999 while doing whole-farm monitoring in five different agro-ecological regions of Bangladesh (see Working Paper 2001/2) the prevailing fish retail market price in each local market was recorded each month. Fish price monitoring was conducted during January 1999 to December 1999. The Field Assistants of the respective sites collected the price information. The fish sellers who were engaged in this profession for at least ten years or above were interviewed. Data were collected for the medium categories (500-700 g) of fishes. The results are presented in Tables 1-5.

Just for interest the price of six different carp species (rui, catla, mrigal, silver carp, common carp and grass carp) were segregated out, see Tables 6-10, and their mean prices over the year were plotted, Fig. 1-5. These tables and figures indicate that the price of carp was generally highest in June. The data also show that there was more than 50% difference for the price of these carps between the high (Barisal) and low (Bogra Sadar) sites. The overall price for these carps was about 10% higher in June than for the overall year. The price difference for June compared to the yearly average was the most for Jessore (19%) and least for Bogra Sadar (< 1%). Among these carp species the price of rui and silver carp increased about 10% in June over the yearly average, common carp was most stable with only a 4% difference in price.

Such information may guide producers and sellers of fish about possible marketing locations and timing strategies though caution is advised in making future predictions. The data also establish a bench mark against which future prices may be compared at these locations. Factors that are expected to affect the price of fish include the size and freshness of fish, abundance and kinds of fish reaching the market, festival dates, weather and overall state of the economy. As a reference the exchange rate in 1999 was approximately Tk. 49/US\$.

Acknowledgements

The authors would like to thank U.S. Agency for International Development (USAID) for the financial support. Special thanks are due to Professor John H. Grover, project leader, for his interest in this activity and for thoughtful comments and other input in preparing the report. Dr. K. M. Jahan and Md. Billal Hossain had significant contribution in report preparation. The authors are also grateful to Professor Dr. Aminul Islam and Hasan Ahmed Chowdhury for their kind cooperation in several ways. The authors are thankful to the partner NGO officials for their friendly cooperation in conducting the research. Special thanks are extended to the fish sellers who provided the informaton.

Table 1. Market prices of different species of fishes at Paikan Bazar, Monohordi, Norsingdi, 1999

Fish species	Monthly average price (Tk/kg)												Average (Tk/Kg)
	Jan	Feb	Mar	Apr	May	June	July	Aug	Sep	Oct	Nov	Dec	
Rui	53	53	53	55	57	58	58	58	52	50	48	50	54
Catla	53	53	53	55	57	58	58	58	52	50	48	50	54
Mrigal	47	47	47	50	50	50	50	50	48	45	40	45	47
Kalibaush	48	48	48	50	50	50	50	50	48	45	40	46	48
Ilish	60	60	60	65	65	60	60	55	50	50	55	55	58
Taki	40	40	40	40	40	40	40	40	38	38	35	38	39
Shol	43	43	43	45	45	45	45	45	42	40	38	40	43
Gajar	40	40	40	40	40	40	40	40	38	35	32	38	39
Koi	52	52	52	55	55	56	56	56	50	50	50	50	53
Pabda	70	70	70	70	70	70	70	70	70	68	65	68	69
Tengra	50	50	50	52	52	50	50	50	48	45	42	48	49
Golsha Tengra	52	52	52	55	55	55	55	55	52	50	48	50	53
Bajuri Tengra	45	45	45	47	47	40	40	40	40	38	35	42	42
Shing	70	70	70	70	70	70	70	70	65	62	60	65	68
Magur	70	70	70	70	70	70	70	70	65	62	60	65	68
Foli	50	50	50	50	50	52	52	52	50	48	45	48	50
Iyr	52	52	52	52	52	50	50	50	48	44	42	50	50
Boal	45	45	45	47	47	48	48	48	46	44	42	42	46
Rita	52	52	52	54	55	55	55	55	52	50	48	50	53
Pangus	62	62	62	65	68	68	68	68	65	62	60	60	64
African Magur	40	40	40	42	42	42	42	42	38	35	32	38	39
Chital	48	48	48	50	52	52	52	52	50	48	45	46	49
Kakila	40	40	40	42	42	42	42	42	38	35	32	38	39
Boro Baim	55	55	55	57	57	52	52	52	50	50	50	52	53
Guchi Baim	40	40	40	42	42	40	40	40	35	32	30	38	38
Kuiccha	30	30	30	32	32	32	32	32	30	28	25	28	30
Tilapia	38	38	38	40	40	40	40	40	38	35	32	35	38
Nilotica	38	38	38	40	40	40	40	40	38	35	32	35	38
Silver carp	40	40	40	42	42	45	45	42	40	38	35	38	41
Mirror carp	40	40	40	42	42	45	45	45	42	40	38	40	42
Common carp	40	40	40	42	42	45	45	45	42	40	38	40	42
Grass carp	38	38	38	40	40	42	40	40	40	35	32	38	38
Bighead carp	40	40	40	42	42	45	45	45	42	40	38	38	41
Deshi shorpunti	50	50	50	52	55	55	55	55	52	50	48	48	52
Rajpunti	50	50	50	52	52	55	55	55	52	50	48	48	51
Tatkini/Bata	42	42	42	44	44	45	45	45	42	40	38	40	42
Bacha	50	50	50	52	52	55	55	55	52	50	48	48	51
Kajuli	50	50	50	52	55	58	58	58	52	50	50	48	53
Belay	45	45	45	48	48	48	48	48	45	42	40	43	45
Fesha	48	48	48	48	48	49	50	50	50	48	45	45	48
Mola	35	35	35	35	35	38	38	35	32	30	25	30	34
Dhela	35	35	35	35	35	38	38	35	32	30	25	30	34
Chela	35	35	35	30	30	30	30	30	30	28	22	30	30
Deshi Punt	30	30	30	38	37	38	38	35	25	20	18	28	31
Kholisha	38	38	38	40	40	42	45	45	42	40	35	35	40
Ghowra	40	40	40	42	45	45	45	42	40	38	35	38	41
Vetki/Koral	NA	NA	NA	NA	NA	NA	NA	NA	NA	NA	NA	NA	NA
Suri	NA	NA	NA	NA	NA	NA	NA	NA	NA	NA	NA	NA	NA
Dankina/Durkina	18	18	18	18	18	18	18	18	15	12	10	16	16
Baspata	NA	NA	NA	NA	NA	NA	NA	NA	NA	NA	NA	NA	NA
Gutum	30	30	30	32	32	32	35	32	30	28	25	30	31
Meni/Veda/Roina	38	38	38	40	40	42	45	42	40	38	0	35	36
Deshi Chanda	15	15	15	15	15	15	16	15	15	12	10	15	14
Chapila	38	38	38	40	42	45	45	42	40	38	35	35	40
Golda chingri	200	200	200	220	220	220	220	220	220	210	210	200	212
Gura Chingri	30	30	30	30	30	30	30	28	28	20	18	25	27
Rup chanda	32	NA	NA	NA	NA	NA	NA	NA	NA	NA	NA	NA	32
Kachki	NA	40	35	40	42	42	42	42	40	30	28	30	37

Source: Survey data (1999)

Table 2. Market prices of different species of fishes at Sonkanda Bazar, Phulpur, Mymensingh, 1999

Fish species	Monthly average price (Tk/kg)												Average (Tk/kg)
	Jan	Feb	Mar	Apr	May	June	July	Aug	Sep	Oct	Nov	Dec	
Rui	75	70	60	85	90	75	64	60	55	60	65	70	69
Catla	85	78	70	90	95	78	66	62	58	64	68	73	74
Mrigal	65	55	50	65	75	64	55	58	52	56	60	64	60
Kalibaush	120	110	90	120	125	105	90	80	72	75	80	85	96
Ilish	55	52	48	60	70	60	50	45	43	46	50	55	53
Taki	40	36	33	40	45	38	35	32	30	35	38	42	37
Shol	90	80	70	85	90	70	60	55	50	54	60	65	69
Gajar	70	66	60	70	75	65	57	50	46	48	50	55	59
Koi	130	120	105	120	125	105	90	85	75	80	85	90	101
Pabda	160	155	145	150	155	135	115	100	90	95	100	110	126
Tengra	45	42	38	52	55	45	42	38	35	38	40	45	43
Golsha Tengra	70	60	55	70	75	62	52	48	45	48	50	55	58
Bajuri Tengra	55	50	45	55	55	46	40	36	34	37	40	45	45
Shing	120	115	100	120	125	110	95	90	80	85	90	95	102
Magur	115	110	90	110	115	100	90	85	78	82	85	90	96
Foli	110	100	80	90	96	80	72	68	62	66	70	75	81
Iyr	100	85	72	85	90	75	68	64	60	64	68	72	75
Boal	60	55	50	68	70	60	50	46	44	48	52	57	55
Rita	90	84	75	85	90	80	70	65	62	65	70	76	76
Pangus	85	80	70	84	88	75	65	60	56	60	65	70	72
African Magur	45	42	40	45	48	42	36	34	32	35	38	44	40
Chital	110	100	85	90	92	80	70	65	60	63	66	70	79
Kakila	50	47	42	48	50	44	40	37	35	37	40	45	43
Boro Baim	85	76	70	80	84	70	60	56	52	56	60	66	68
Guchi Baim	50	45	42	45	50	42	38	36	32	36	42	46	42
Kuiccha	60	52	48	55	60	50	45	42	38	40	44	48	49
Tilapia	45	42	40	46	48	40	36	34	32	36	39	43	40
Nilotica	75	70	65	75	80	66	58	55	52	57	62	66	65
Silver carp	40	38	35	45	48	42	38	35	33	36	38	42	39
Mirror carp	75	70	65	75	80	66	56	52	52	58	62	67	65
Common carp	70	65	60	70	75	60	52	50	50	55	60	62	61
Grass carp	42	38	35	42	45	40	35	33	32	36	41	43	39
Bighead carp	45	42	40	48	52	43	38	35	34	38	43	46	42
Deshi shorpunti	44	41	38	43	46	40	38	34	32	35	40	45	40
Rajpunti	52	45	40	50	55	48	44	42	40	43	45	50	46
Tatkini/Bata	NA	NA	NA	NA	NA	NA	NA	NA	NA	NA	NA	NA	NA
Bacha	NA	NA	NA	NA	NA	NA	NA	NA	NA	NA	NA	NA	NA
Kajuli	130	110	100	115	120	100	85	80	74	78	80	86	97
Belay	35	32	30	42	46	42	38	34	32	37	40	45	38
Fesha	NA	NA	NA	NA	NA	NA	NA	NA	NA	NA	NA	NA	NA
Mola	55	52	50	60	62	52	48	46	44	48	51	55	52
Dhela	60	55	50	65	65	55	50	48	46	50	53	58	55
Chela	46	44	40	50	55	46	42	40	38	42	45	50	45
Deshi Punti	40	36	32	35	40	35	32	30	28	32	35	40	35
Kholisha	45	42	38	50	54	46	42	40	38	43	47	50	45
Ghowra	60	55	50	65	68	56	50	47	45	50	55	60	55
Vetki/Koral	NA	NA	NA	NA	NA	NA	NA	NA	NA	NA	NA	NA	NA
Suri	NA	NA	NA	NA	NA	NA	NA	NA	NA	NA	NA	NA	NA
Dankina/Durkina	32	30	28	40	45	36	32	30	26	30	34	38	33
Baspata	65	58	50	60	62	50	45	43	40	44	46	50	51
Gutum	42	40	36	45	48	40	38	35	32	35	38	42	39
Meni/Veda/Roina	60	50	45	60	64	52	45	42	38	42	45	48	49
Deshi Chanda	32	30	28	38	42	35	32	28	26	28	31	34	32
Chapila	52	48	42	50	55	44	42	40	36	40	43	45	45
Golda chingri	320	325	320	330	335	330	330	325	325	315	315	325	325
Gura Chingri	40	36	35	40	45	40	35	32	30	33	36	40	37
Rup chanda	NA	NA	NA	NA	NA	NA	NA	NA	NA	NA	NA	NA	NA
Boro Dai	55	48	42	50	55	46	44	40	37	39	42	45	45
Gaina	72	65	55	60	63	55	48	45	43	45	48	52	54
Jaour/Lach	65	60	55	62	65	55	46	28	43	45	48	55	52
Chata	35	30	28	32	35	32	30	30	25	28	30	35	31
Rauga	36	32	30	35	NA	34	NA	45	NA	35	39	42	36
Rita/Chila	38	34	30	38	40	36	NA	NA	NA	NA	NA	NA	36

Source: Survey data (1999)

Table 3. Market prices of different species of fishes at Monirampur, Jessore, 1999

Fish species	Monthly average price (Tk/kg)												Average (Tk/Kg)
	Jan	Feb	Mar	Apr	May	June	July	Aug	Sep	Oct	Nov	Dec	
Rui	70	75	80	80	85	90	85	80	70	70	65	70	77
Catla	50	60	70	70	75	75	70	70	50	55	45	50	63
Mrigal	40	55	65	65	65	75	70	70	50	75	70	85	59
Kalibaush	75	80	80	80	100	100	90	80	70	75	70	85	82
Ilish	110	120	110	120	140	110	100	100	80	110	90	100	108
Taki	40	40	50	60	80	50	50	30	30	35	30	40	45
Shol	90	80	90	110	120	100	90	70	60	80	80	90	88
Gajar	50	45	45	55	70	60	55	50	50	40	40	40	50
Koi	260	300	255	320	400	250	240	250	200	200	220	200	258
Pabda	120	140	120	120	140	200	190	200	180	100	120	100	144
Tengra	120	120	80	120	120	160	150	140	100	100	100	90	117
Golsha Tengra	80	100	90	90	100	90	80	80	60	70	80	40	80
Bajuri Tengra	40	40	40	35	50	100	90	60	40	40	35	35	50
Shing	140	160	180	200	240	200	190	180	180	160	150	140	177
Magur	160	180	200	240	280	200	190	180	180	180	180	160	194
Foli	80	60	70	70	90	100	90	80	60	70	60	40	73
Iyr	120	120	90	120	140	90	80	80	70	90	90	90	98
Boal	110	100	120	100	120	85	80	85	75	100	80	100	96
Rita	90	85	90	85	95	90	85	90	80	85	85	90	88
Pangus	160	120	110	120	140	140	90	80	80	100	100	120	113
African Magur	25	25	40	40	50	35	35	30	25	35	30	35	34
Chital	140	120	150	160	160	120	110	100	80	120	140	120	127
Kakila	40	40	50	50	60	70	60	60	50	35	35	40	49
Boro Baim	100	80	120	140	140	120	110	100	80	100	100	100	108
Guchi Baim	50	50	60	50	60	80	70	60	50	40	40	40	54
Kuiccha	50	40	40	50	70	80	80	80	50	45	40	40	55
Tilapia	50	40	35	40	50	50	50	40	30	35	40	40	42
Nilotica	60	65	65	70	70	50	50	40	30	60	50	50	55
Silver carp	30	30	35	40	40	50	45	35	30	30	30	30	35
Mirror carp	50	45	40	55	55	55	50	45	40	40	40	40	46
Common carp	45	50	55	50	45	55	50	45	40	45	45	45	48
Grass carp	45	45	50	60	50	60	55	50	45	40	40	40	48
Bighead carp	32	35	40	40	40	50	45	35	30	35	30	35	37
Deshi shorpunti	140	140	160	160	180	120	110	100	80	120	120	120	129
Rajpunti	60	50	55	60	70	50	45	40	40	50	40	50	51
Tatkini/Bata	60	80	70	110	120	100	90	60	60	80	100	80	84
Bacha	NA	NA	NA	NA	NA	NA	NA	NA	NA	NA	NA	NA	NA
Kajuli	NA	NA	NA	NA	NA	NA	NA	NA	NA	NA	NA	NA	NA
Belay	40	40	50	40	50	60	50	40	40	40	30	40	43
Fesha	40	40	50	50	55	80	70	60	50	50	40	45	53
Mola	30	NA	40	40	45	100	90	80	60	40	35	40	55
Dhela	NA	NA	50	50	55	50	50	55	55	50	40	35	49
Chela	120	120	120	120	120	80	70	70	50	100	80	100	96
Deshi Puntti	80	40	60	80	80	80	70	50	40	50	50	50	61
Kholisha	50	50	55	50	60	80	75	60	50	50	40	50	56
Ghowra	NA	NA	NA	NA	70	NA	NA	NA	NA	NA	55	NA	63
Vetki/Koral	90	110	140	120	140	110	100	80	70	120	100	140	110
Suri	NA	NA	NA	NA	NA	NA	NA	NA	NA	NA	NA	40	40
Dankina/Durkina	NA	80	50	60	70	80	70	60	50	70	40	50	62
Baspata	50	50	40	55	65	60	55	40	35	50	45	45	49
Gutum	60	50	60	60	60	80	80	60	50	40	50	50	58
Meni/Veda/Roina	100	100	120	120	120	100	100	80	80	80	90	80	98
Deshi Chanda	30	40	40	45	35	40	40	35	30	40	30	30	36
Chapila	60	60	60	55	60	60	60	40	30	40	50	60	53
Golda chingri	390	380	370	370	360	380	370	370	360	390	390	400	378
Gura Chingri	40	35	30	30	30	40	30	30	25	30	30	30	32
Rup chanda	40	40	40	40	35	40	40	35	30	40	35	40	38
Kachki	NA	40	35	40	42	42	42	42	40	30	28	30	37

Source: Survey data (1999)

Table 4. Market prices of different species of fishes at Mahilara Bazar, Gouranadi, Barisal, 1999

Fish species	Monthly average price (Tk/kg)												Average (Tk/Kg)
	Jan	Feb	Mar	Apr	May	June	July	Aug	Sep	Oct	Nov	Dec	
Rui	100	100	100	110	110	110	100	100	110	100	100	100	103
Catla	90	90	90	100	100	100	90	90	100	90	90	90	93
Mrigal	70	70	70	75	70	70	75	70	75	70	70	70	71
Kalibaush	80	75	75	80	80	80	80	80	80	80	80	80	79
Ilish	120	120	120	120	120	110	100	100	100	100	110	110	111
Taki	40	60	60	60	50	50	50	60	50	50	60	50	53
Shol	75	80	80	85	85	80	80	80	85	80	80	80	81
Gajar	70	70	70	75	70	70	70	70	70	70	70	70	70
Koi	100	100	100	100	100	100	100	100	100	100	100	100	100
Pabda	120	120	120	120	120	110	120	120	120	110	110	110	117
Tengra	80	80	80	85	80	80	80	85	80	80	80	80	81
Golsha Tengra	60	70	70	70	70	70	70	70	70	70	70	70	69
Bajuri Tengra	60	60	60	70	65	65	65	70	70	70	60	60	65
Shing	110	110	110	110	110	100	100	110	110	110	100	100	107
Magur	110	110	110	110	110	100	100	110	110	110	100	100	107
Foli	100	100	100	100	100	100	100	100	100	100	90	90	98
Iyr	120	120	120	120	120	120	120	120	120	120	110	110	118
Boal	120	120	120	120	120	120	120	120	120	120	110	110	118
Rita	70	70	70	70	70	70	70	70	70	70	70	70	70
Pangus	130	130	130	150	150	150	150	150	150	150	130	135	142
African Magur	70	70	70	75	70	70	75	75	75	70	70	70	72
Chital	110	110	100	110	110	110	110	110	110	110	100	100	108
Kakila	NA	NA	NA	NA	NA	NA	NA	NA	NA	NA	NA	NA	NA
Boro Baim	100	100	100	100	100	100	90	90	90	90	90	90	95
Guchi Baim	60	60	60	60	60	60	50	50	50	50	50	50	55
Kuiccha	NA	NA	NA	NA	NA	NA	NA	NA	NA	NA	NA	NA	NA
Tilapia	70	70	70	75	70	70	70	70	70	70	70	70	70
Nilotica	80	80	80	80	80	80	80	80	80	80	80	80	80
Silver carp	60	60	60	60	60	60	60	60	60	60	60	60	60
Mirror carp	75	75	80	75	70	80	80	80	80	80	75	80	77
Common carp	75	70	75	70	75	75	75	75	75	75	70	75	73
Grass carp	60	60	60	60	60	60	65	60	60	60	60	60	60
Bighead carp	70	75	70	70	70	70	70	70	70	70	70	70	70
Deshi shorpunti	70	75	70	60	65	60	65	70	70	70	70	65	68
Rajpunti	65	65	65	70	60	70	60	60	60	65	65	60	63
Tatkini/Bata	70	70	65	65	65	70	60	60	65	65	65	60	65
Bacha	NA	NA	NA	NA	NA	NA	NA	NA	NA	NA	NA	NA	NA
Kajuli	NA	NA	NA	NA	NA	NA	NA	NA	NA	NA	NA	NA	NA
Belay	80	80	75	70	70	70	70	70	80	80	70	70	74
Fesha	NA	NA	NA	NA	NA	NA	NA	NA	NA	NA	NA	NA	NA
Mola	60	60	60	60	60	60	60	65	65	65	50	50	60
Dhela	NA	NA	NA	NA	NA	NA	NA	NA	NA	NA	NA	NA	NA
Chela	NA	NA	NA	NA	NA	NA	NA	NA	NA	NA	NA	NA	NA
Deshi Puntl	50	50	50	60	60	60	60	60	65	65	50	50	57
Kholisha	60	60	60	65	65	65	60	65	65	65	60	60	63
Ghowra	40	40	40	40	40	40	40	40	40	40	40	40	40
Vetki/Koral	100	100	95	100	100	90	90	90	85	90	90	100	94
Suri	NA	NA	NA	NA	NA	NA	NA	NA	NA	NA	NA	NA	NA
Dankina/Durkina	40	40	40	40	40	40	40	40	40	60	60	60	45
Baspata	NA	NA	NA	NA	NA	NA	NA	NA	NA	NA	NA	NA	NA
Gutum	60	60	60	60	60	60	60	60	60	60	50	50	58
Meni/Veda/Roina	60	60	60	65	65	65	60	65	65	65	60	60	63
Deshi Chanda	50	65	60	65	60	65	60	60	65	60	60	60	61
Chapila	NA	NA	NA	NA	NA	NA	NA	NA	NA	NA	NA	NA	NA
Golda chingri	800	800	800	810	800	800	800	810	810	810	800	800	803
Gura Chingri	60	60	70	80	80	80	80	80	80	80	70	60	73
Rup chanda	80	70	70	70	70	70	70	70	70	70	70	70	71

Source: Survey data (1999)

Table 5. Market prices of different species of fishes at Chandmuha hat Bazar, Bogra Sadar, 1999

Fish species	Monthly average price (Tk/kg)												Average (Tk/Kg)
	Jan	Feb	Mar	Apr	May	June	July	Aug	Sep	Oct	Nov	Dec	
Rui	42	45	40	35	40	50	45	40	36	50	40	50	43
Catla	36	38	35	38	35	40	38	35	32	40	40	40	37
Mrigal	45	45	42	40	40	45	40	40	40	45	42	50	43
Kalibaush	NA	NA	NA	NA	NA	NA	NA	NA	NA	NA	NA	NA	NA
Ilish	NA	70	NA	NA	NA	80	70	60	45	60	50	80	64
Taki	NA	NA	28	NA	32	NA	28	30	20	NA	NA	35	29
Shol	60	60	50	60	NA	60	NA	50	55	50	50	NA	55
Gajar	NA	NA	NA	NA	NA	NA	NA	NA	NA	NA	NA	NA	NA
Koi	80	80	75	70	80	85	NA	60	60	80	70	65	73
Pabda	NA	NA	NA	NA	NA	NA	NA	NA	NA	NA	NA	NA	NA
Tengra	40	45	48	40	48	40	40	40	40	40	40	40	42
Golsha Tengra	42	40	42	NA	NA	NA	NA	NA	NA	NA	NA	NA	NA
Bajuri Tengra	NA	NA	NA	NA	NA	NA	NA	NA	NA	NA	NA	NA	NA
Shing	120	120	100	90	90	110	100	90	110	100	80	100	101
Magur	120	120	100	90	90	110	100	90	110	100	80	100	101
Foli	60	60	62	60	50	50	60	NA	NA	NA	NA	NA	57
Iyr	NA	NA	NA	NA	NA	NA	NA	NA	NA	NA	NA	NA	NA
Boal	70	70	65	NA	60	NA	60	50	50	NA	NA	NA	61
Rita	NA	NA	NA	NA	NA	NA	NA	NA	NA	NA	NA	NA	NA
Pangus	70	75	80	80	80	80	70	80	90	80	85	90	80
African Magur	25	25	28	NA	NA	30	NA	28	NA	NA	NA	NA	27
Chital	NA	NA	NA	NA	NA	NA	NA	NA	NA	NA	NA	NA	NA
Kakila	32	35	36	NA	NA	NA	32	32	NA	NA	NA	NA	33
Boro Baim	NA	NA	NA	NA	NA	NA	NA	NA	NA	NA	NA	NA	NA
Guchi Baim	NA	30	32	NA	NA	NA	30	NA	NA	NA	NA	NA	31
Kuiccha	NA	NA	NA	NA	NA	NA	NA	NA	NA	NA	NA	NA	NA
Tilapia	40	42	40	45	40	40	40	40	40	45	40	40	41
Nilotica	40	42	40	45	NA	NA	35	NA	NA	NA	NA	NA	40
Silver carp	25	25	28	30	28	28	28	25	30	30	25	25	27
Mirror carp	40	42	40	40	40	40	40	40	40	40	NA	45	41
Common carp	40	42	40	40	40	40	40	40	42	40	40	45	41
Grass carp	30	30	30	30	30	30	30	30	32	30	30	35	31
Bighead carp	25	25	25	NA	NA	25	25	NA	28	30	NA	NA	26
Deshi shorpunti	NA	NA	NA	NA	NA	NA	NA	NA	NA	NA	NA	NA	NA
Rajpunti	40	40	40	45	48	42	40	40	25	45	40	50	41
Tatkini/Bata	50	52	50	40	45	40	40	42	40	48	45	50	45
Bacha	NA	NA	NA	NA	NA	NA	NA	NA	NA	NA	NA	NA	NA
Kajuli	NA	NA	NA	NA	NA	NA	NA	NA	NA	NA	NA	NA	NA
Belay	16	16	20	NA	NA	NA	18	NA	NA	NA	NA	NA	18
Fesha	NA	NA	NA	NA	NA	NA	NA	NA	NA	NA	NA	NA	NA
Mola	40	42	42	40	40	40	40	35	40	40	35	45	40
Dhela	36	36	30	30	30	32	NA	NA	NA	NA	NA	NA	32
Chela	36	40	40	40	35	40	40	35	NA	NA	NA	NA	38
Deshi Punt	20	22	25	20	28	28	20	24	24	25	24	30	24
Kholisha	30	30	30	NA	NA	NA	30	NA	NA	NA	NA	NA	30
Ghowra	NA	NA	NA	NA	NA	NA	NA	NA	NA	NA	NA	NA	NA
Vetki/Koral	NA	NA	NA	NA	NA	NA	NA	NA	NA	NA	NA	NA	NA
Suri	NA	NA	NA	NA	NA	NA	NA	NA	NA	NA	NA	NA	NA
Dankina/Durkina	20	22	25	NA	NA	NA	20	20	20	20	24	20	21
Baspata	NA	NA	NA	NA	NA	NA	NA	NA	NA	NA	NA	NA	NA
Gutum	NA	NA	NA	NA	NA	NA	NA	NA	NA	NA	NA	NA	NA
Meni/Veda/Roina	NA	NA	NA	NA	NA	NA	NA	NA	NA	NA	NA	NA	NA
Deshi Chanda	20	22	20	20	NA	NA	NA	20	NA	20	20	NA	20
Chapila	NA	NA	NA	NA	NA	NA	NA	NA	NA	NA	NA	NA	NA
Golda chingri	NA	NA	NA	NA	NA	NA	NA	NA	NA	NA	NA	NA	NA
Gura Chingri	20	22	25	25	25	25	20	25	NA	30	32	32	26
Rup chanda	NA	NA	NA	NA	NA	NA	NA	NA	NA	NA	NA	NA	NA

Source: Survey data (1999)

Table 6. Seasonal price variation of carp fishes at Pakian Bazar, Manohardi, Norsingdi, 1999

Fish species	Monthly average price (Tk/kg)												Yearly average price (Tk/kg)
	Jan	Feb	Mar	Apr	May	June	July	Aug	Sep	Oct	Nov	Dec	
Rui	53	53	53	55	57	58	58	58	52	50	48	50	54
Catla	53	53	53	55	57	58	58	58	52	50	48	50	54
Mrigal	47	47	47	50	50	50	50	50	48	45	40	45	47
Silver carp	40	40	40	42	42	45	45	42	40	38	35	38	41
Common carp	40	40	40	42	42	45	45	45	42	40	38	40	42
Grass carp	38	38	38	40	40	42	40	40	40	35	32	38	38
Average price (All species)	45	45	45	47	48	50	49	49	46	43	40	44	46

Source: Survey data (1999)

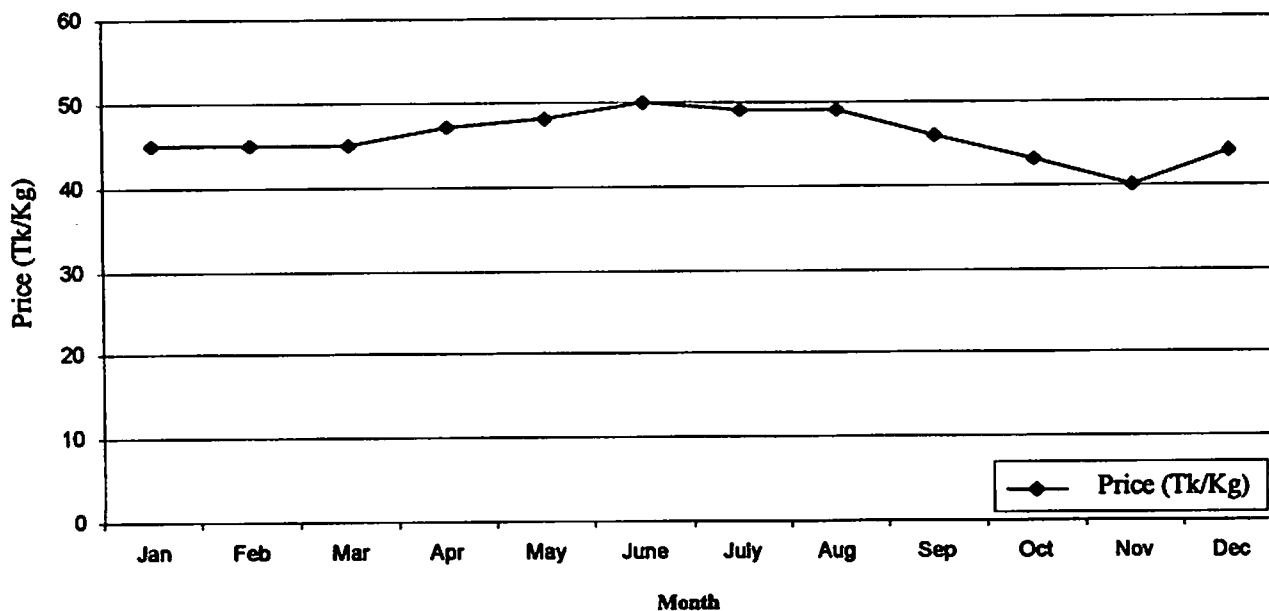


Figure 1: Seasonal price of variation of carp fishes at Pakian Bazar, Manohardi, Narsingdi, 1999

Table 7. Seasonal price variation of carp fishes at Sonkanda Bazar, Phulpur, Mymensingh, 1999

Fish species	Monthly average price (Tk/kg)												Yearly average price (Tk/kg)
	Jan	Feb	Mar	Apr	May	June	July	Aug	Sep	Oct	Nov	Dec	
Rui	75	70	60	85	90	75	64	60	55	60	65	70	69
Catla	85	78	70	90	95	78	66	62	58	64	68	73	74
Mrigal	65	55	50	65	75	64	55	58	52	56	60	64	60
Silver carp	40	38	35	45	48	42	38	35	33	36	38	42	39
Common carp	70	65	60	70	75	60	52	50	50	55	60	62	61
Grass carp	42	38	35	42	45	40	35	33	32	36	41	43	39
Average price (All species)	63	57	52	66	71	60	52	50	47	51	55	59	57

Source: Survey data (1999)

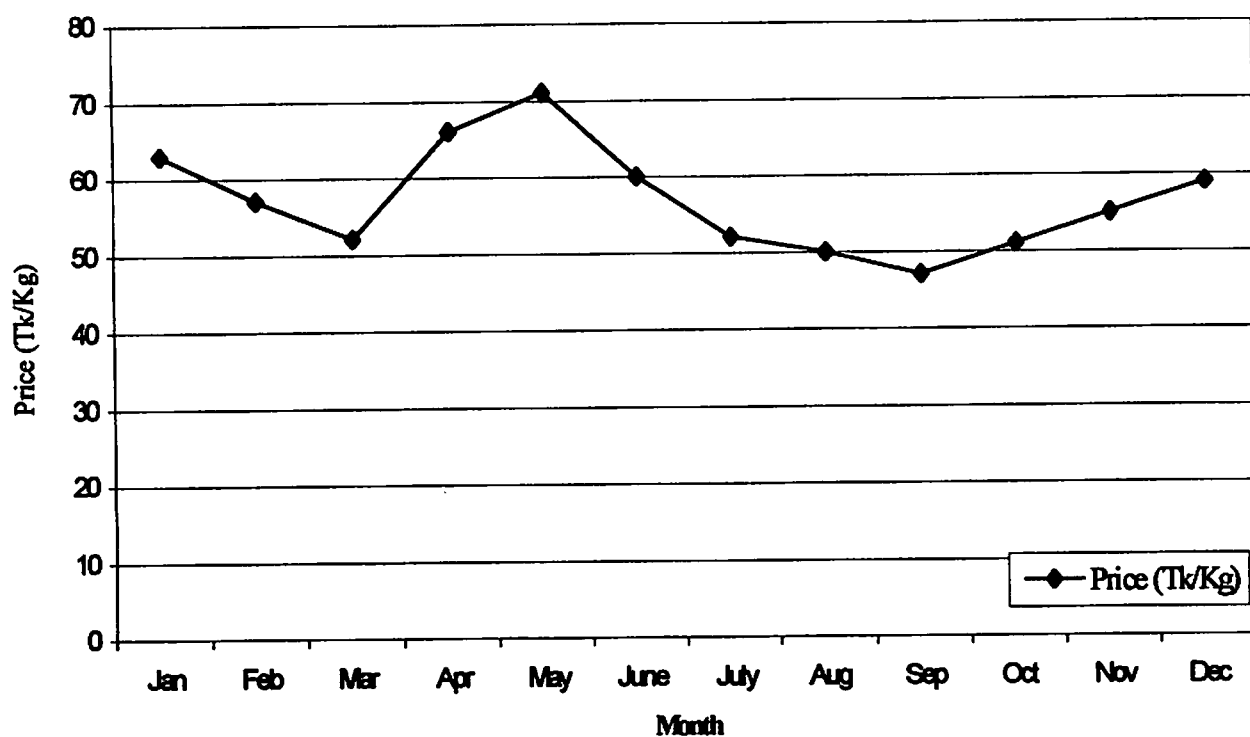
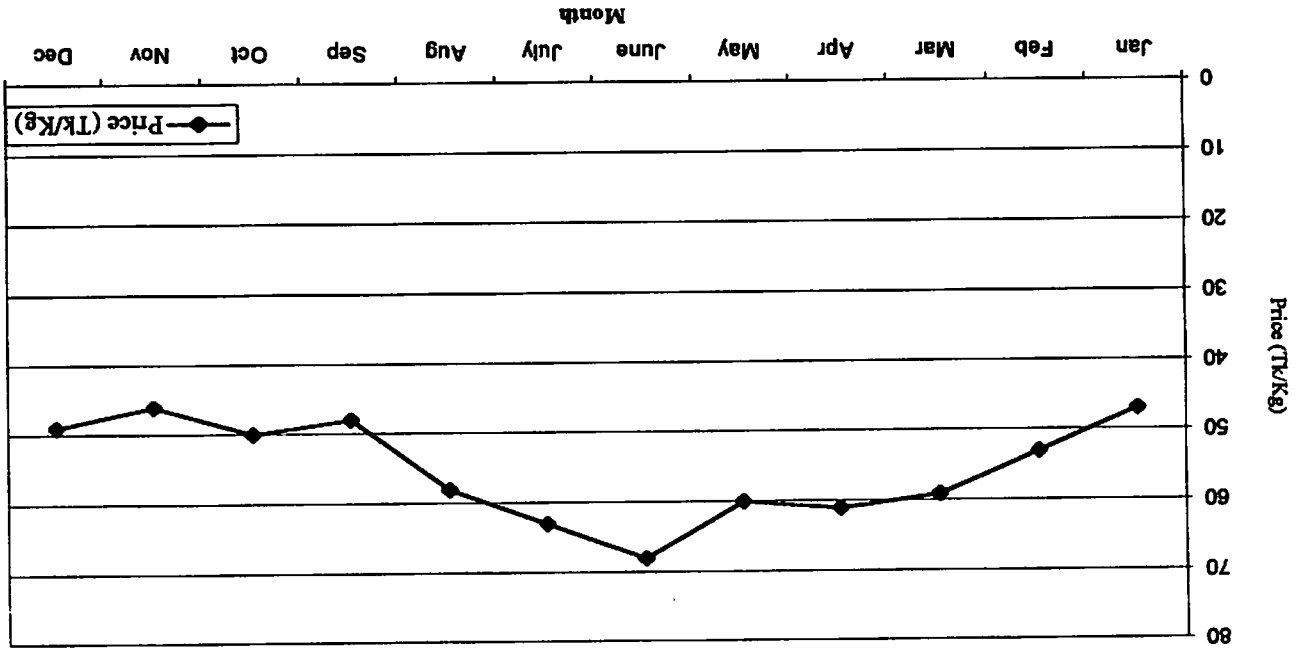


Figure 2. Seasonal price variation of carp fishes at Sonkanda Bazar, Phulpur, Mymensingh, 1999

Figure 3. Seasonal price variation of carp fishes at Manirampur, Jessore, 1999



Source: Survey data (1999)

Fish species	Monthly average price (TK/kg)												Yearly average price (TK/kg)
	Jan	Feb	Mar	Apr	May	June	July	Aug	Sep	Oct	Nov	Dec	
Rui	70	75	80	80	85	90	85	80	70	70	65	70	77
Catla	50	60	70	70	75	75	70	70	50	60	50	60	63
Mirgal	40	55	65	65	65	75	70	70	50	55	45	50	59
Silver carp	30	30	35	40	40	50	45	35	30	30	30	30	35
Common carp	45	50	55	50	45	55	50	45	40	45	45	45	48
Grass carp	45	45	50	60	50	60	55	50	45	40	40	40	48
Average price (All species)	47	53	59	61	60	68	63	58	48	50	46	49	55

Table 8. Seasonal price variation of carp fishes at Manirampur, Jessore, 1999

Table 9. Seasonal price variation of carp fishes at Mahilara Bazar, Gaurnadi, Barisal, 1999

Fish species	Monthly average price (Tk/kg)												Yearly average price (Tk/kg)
	Jan	Feb	Mar	Apr	May	June	July	Aug	Sep	Oct	Nov	Dec	
Rui	100	100	100	110	110	110	100	100	110	100	100	100	103
Catla	90	90	90	100	100	100	90	90	100	90	90	90	93
Mrigal	70	70	70	75	70	70	75	70	75	70	70	70	71
Silver carp	60	60	60	60	60	60	60	60	60	60	60	60	60
Common carp	75	70	75	70	75	75	75	75	75	70	75	70	73
Grass carp	60	60	60	60	60	60	65	60	60	60	60	60	60
Average price (All species)	76	75	76	79	79	79	78	76	80	75	76	75	77

Source: Survey data (1999)

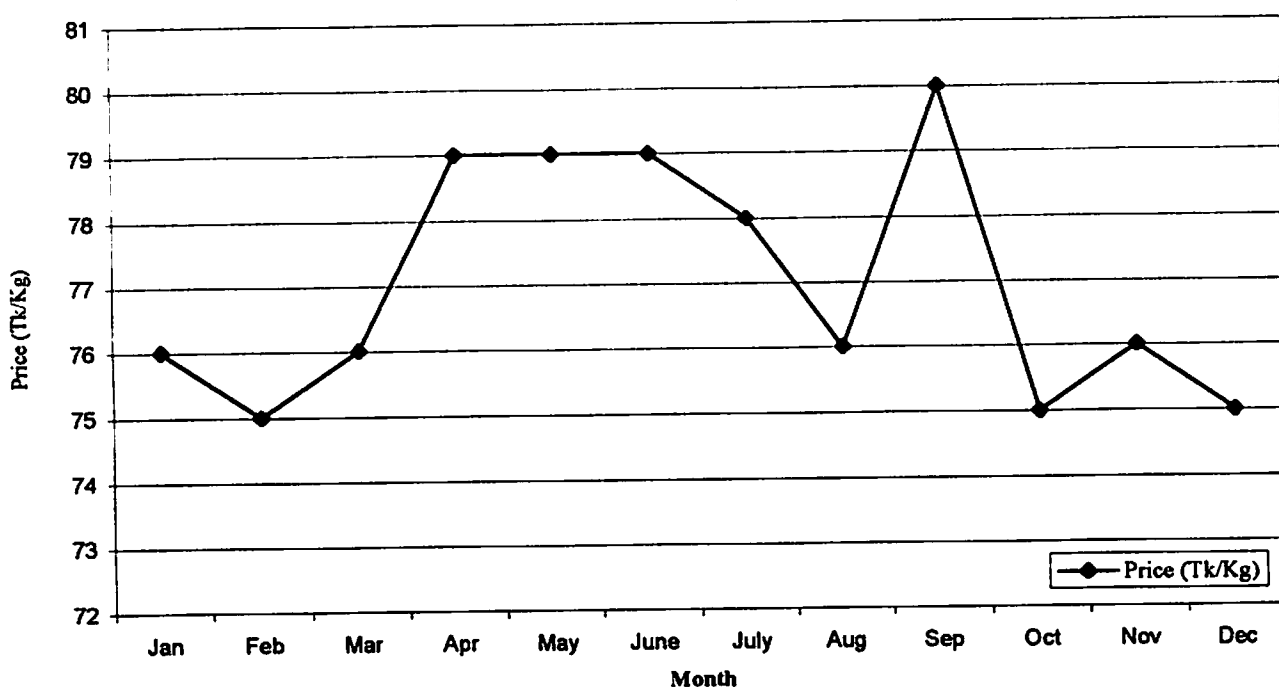


Figure 4. Seasonal price variation of carp fishes at Mahilara Bazar, Gaurnadi, Barisal, 1999

Table 10. Seasonal price variation of carp fishes at Chandmuha hat Bazar, Bogra Sadar, 1999

Fish species	Monthly average price (Tk/kg)												Yearly average price (Tk/kg)
	Jan	Feb	Mar	Apr	May	June	July	Aug	Sep	Oct	Nov	Dec	
Rui	42	45	40	35	40	50	45	40	36	50	40	50	43
Catla	36	38	35	38	35	40	38	35	32	40	40	40	37
Mrigal	45	45	42	40	40	45	40	40	40	45	42	50	43
Silver carp	25	25	28	30	28	28	28	25	30	30	25	25	27
Common carp	40	42	40	40	40	40	40	40	42	40	40	45	41
Grass carp	30	30	30	30	30	30	30	30	32	30	30	35	31
Average price (All species)	36	38	36	36	36	39	37	35	35	39	36	41	37

Source: Survey data (1999)

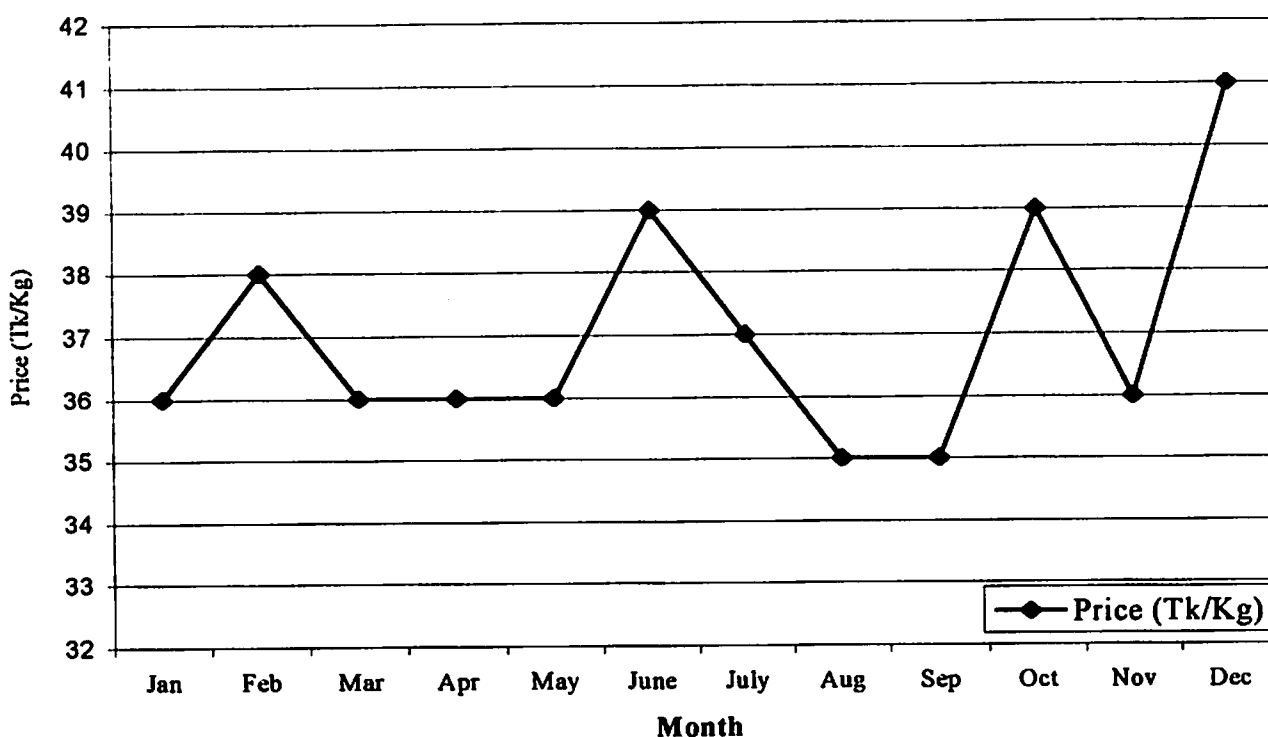


Figure 5: Seasonal price variation of carp fishes at Chandmuha hat Bazar, Bogra Sadar, 1999